

Lee County, Iowa

Horizontal Datum: **NAD 83(2011)** - Vertical Datum: **NAVD 1988**

Iowa State Plane South Zone (1402)

Iowa Regional Coordinate System Zone 14 Burlington

US Survey Feet

2014

Point Name: **307**

Designation: CBN control station "JACKSON" PID: LD0867

NAD 83(NA2011) Latitude: **N40°52'20.17798"** Longitude: **W91°35'51.85819"**

NAVD 88 Ortho Height: **716.830sft** Ellip. Ht: **608.183sft** **Geoid12A**

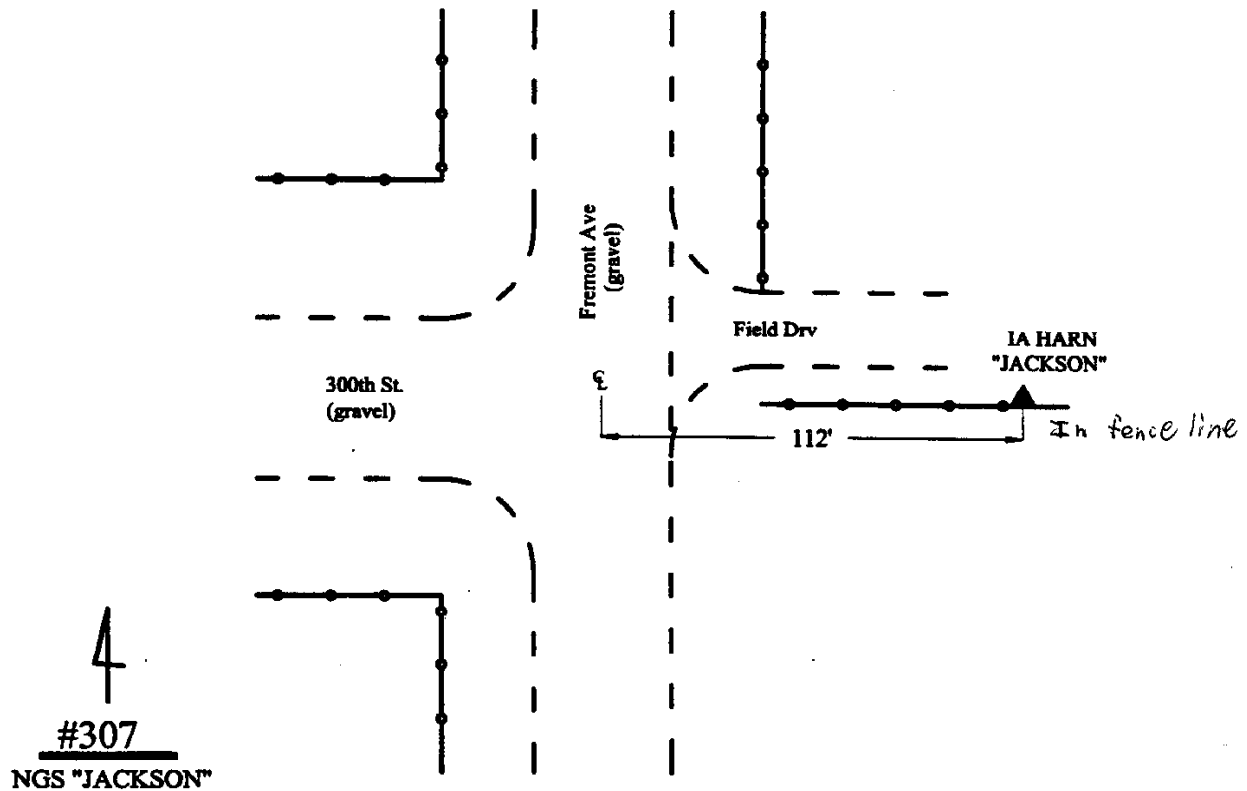
Iowa South Zone (1402) Northing: **323547.500sft** Easting: **2166456.500sft**

Mapping Angle: **1°15'11"** Combination Scale Factor: **0.9999357051**

laRCS Zone 14 Northing: **6426902.050sft** Easting: **24403825.670sft**

Mapping Angle: **-0°13'39"** Combination Scale Factor: **0.9999995495**

Monument Type: Triangulation station disk set in the top of a concrete post.



This document was prepared by DCI on December 17, 2014 for use by Lee County, Iowa