

Lee County, Iowa

Horizontal Datum: **NAD 83(2011)** - Vertical Datum: **NAVD 1988**
Iowa State Plane South Zone (1402)
Iowa Regional Coordinate System Zone 14 Burlington
US Survey Feet
2014

Point Name: **315**

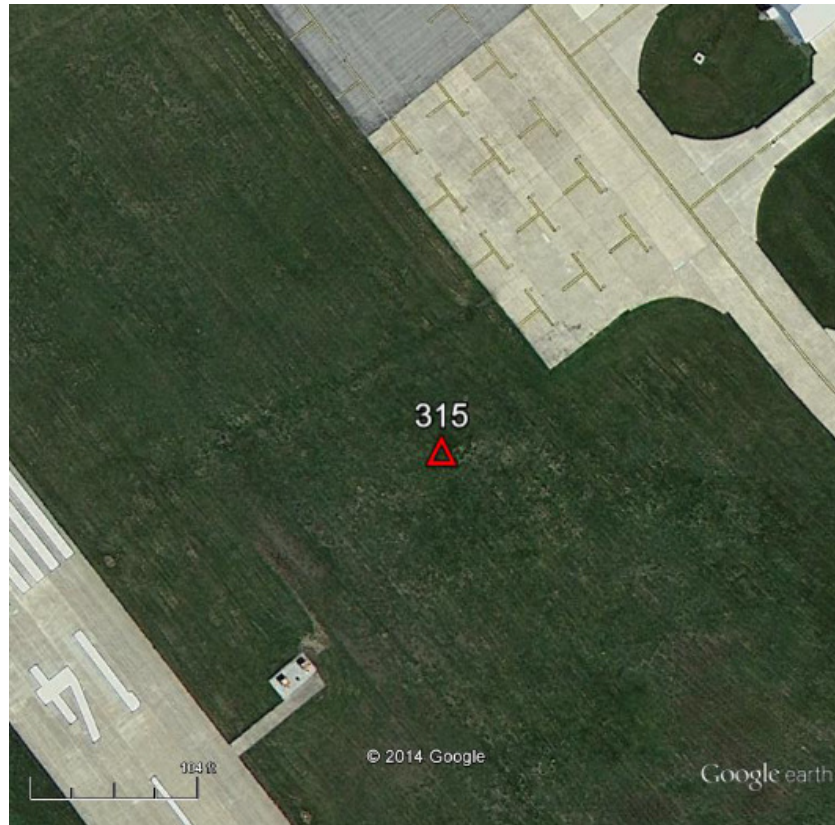
Designation: Primary Airport Control Station "EOK A 2000" PID: AJ8295

NAD 83(NA2011) Latitude: **N40°27'47.51268"** Longitude: **W91°26'04.65943"**
NAVD 88 Ortho Height: **666.728sft** Ellip. Ht: **557.673sft** **Geoid12A**

Iowa South Zone (1402) Northing: **175582.070sft** Easting: **2215092.480sft**
Mapping Angle: **1°21'38"** Combination Scale Factor: **1.0000040135**

IaRCS Zone 14 Northing: **6277724.976sft** Easting: **24448624.428sft**
Mapping Angle: **-0°07'11"** Combination Scale Factor: **0.9999944045**

Monument Type: A stainless steel rod in sleeve (10 FT. +).



This document was prepared by DCI on December 17, 2014 for use by Lee County, Iowa