

Linn County and the City of Cedar Rapids, Iowa
 Iowa North Zone (1401)
 Horiz. Datum: NAD83(1996)
 Vert. Datum: NAVD 1988
 US Survey Feet
 2005

Point Name: **BenCo 2003-80**

Designation: BENTON CO. GPS CONTROL PT. 2003-080, set by DCI for Benton Co. in 2003

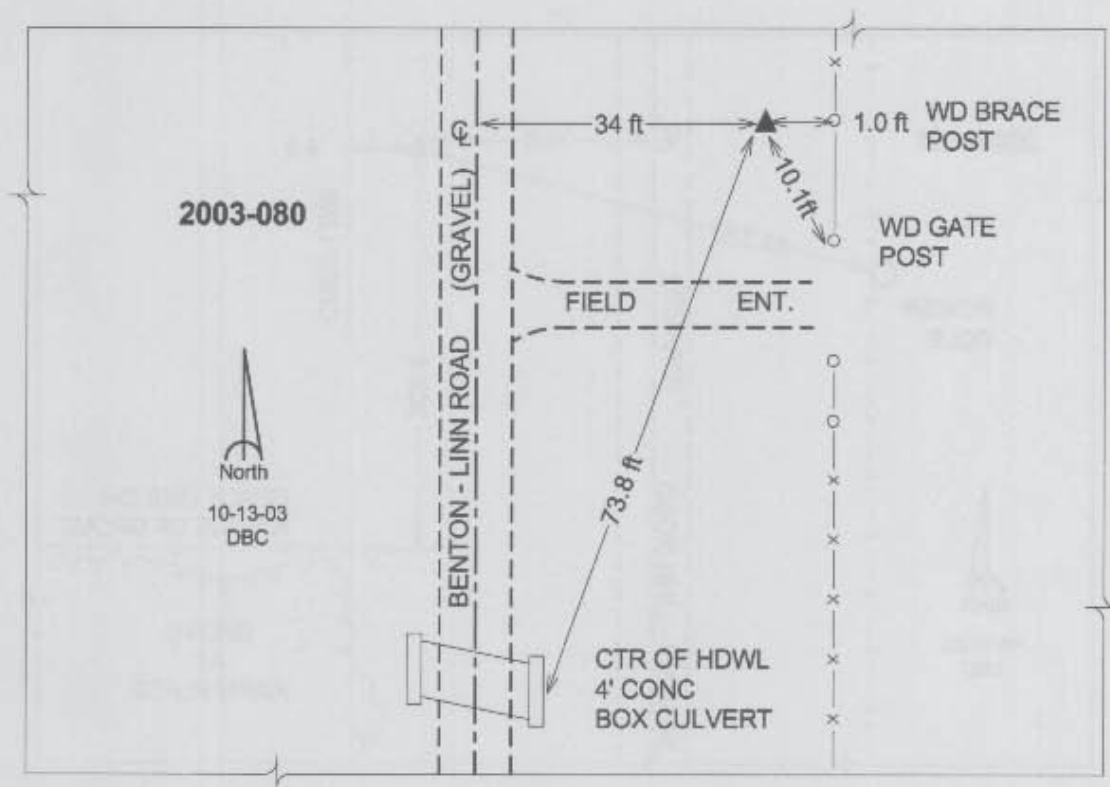
Northing: **3449322.71sft** Easting: **5374654.30sft**

Orthometric Height: **809.07sft** Ellipsoid Height: **704.34sft** **Geoid03**

Latitude: **41°57'00.27748"N** Longitude: **91°49'59.51489"W**

Mapping Angle: **1°07'47"** Combination Scale Factor: **0.99998960**

Monument Type: Berntsen Top Security Rod Monument with a 2-1/2" dia. domed survey cap and permanent magnet encased in a 5"dia. PVC pipe with a NGS style aluminum access cover.



Prepared by DCI and GBC for Linn Co. and the City of Cedar Rapids, Iowa (Revised 08-05-05).