

Linn County and the City of Cedar Rapids, Iowa
Iowa North Zone (1401)
Horiz. Datum: NAD83(1996)
Vert. Datum: NAVD 1988
US Survey Feet
2005

Point Name: **BenCo 2003-81**

Designation: BENTON CO. GPS CONTROL PT. 2003-081, set by DCI for Benton Co. in 2003

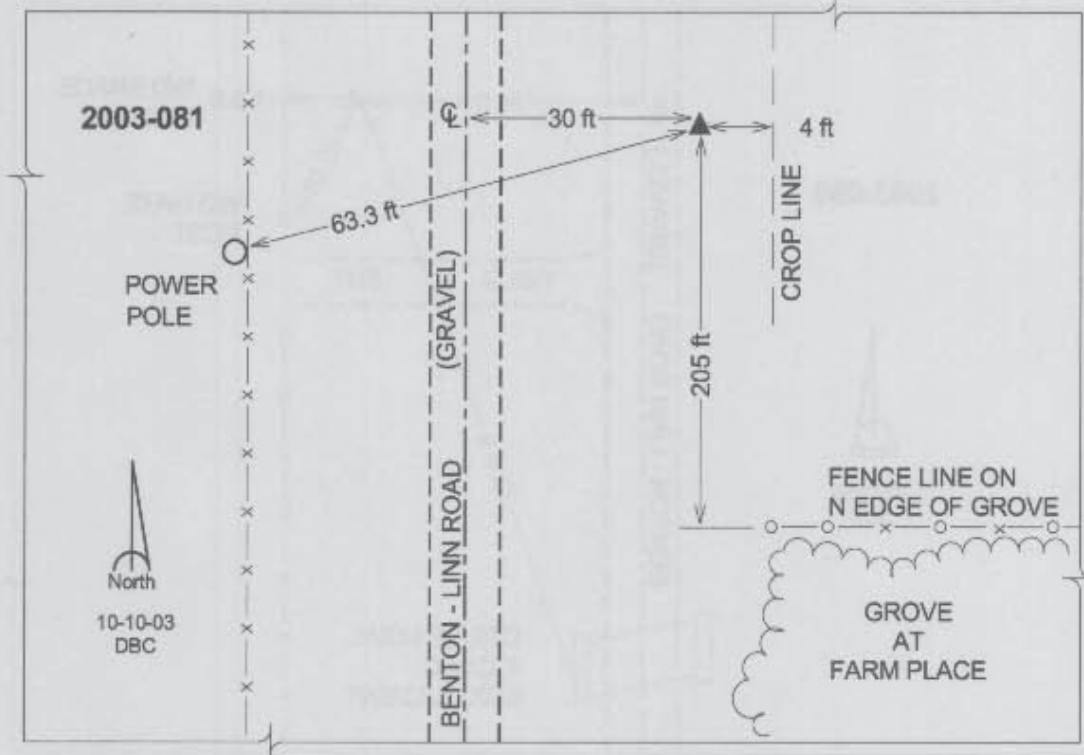
Northing: **3479161.07sft** Easting: **5373552.07sft**

Orthometric Height: **841.49sft** Ellipsoid Height: **737.41sft** **Geoid03**

Latitude: **42°01'55.20120"N** Longitude: **91°50'06.32240"W**

Mapping Angle: **1°07'42"** Combination Scale Factor: **0.99997129**

Monument Type: Berntsen Top Security Rod Monument with a 2-1/2" dia. domed survey cap and permanent magnet encased in a 5"dia. PVC pipe with a NGS style aluminum access cover.



Prepared by DCI and GBC for Linn Co. and the City of Cedar Rapids, Iowa (Revised 08-05-05).