

Linn County and the City of Cedar Rapids, Iowa
Iowa North Zone (1401)
Horiz. Datum: NAD83(1996)
Vert. Datum: NAVD 1988
US Survey Feet
2005

Point Name: **BenCo 2003-82**

Designation: BENTON CO. GPS CONTROL PT. 2003-082, set by DCI for Benton Co. in 2003

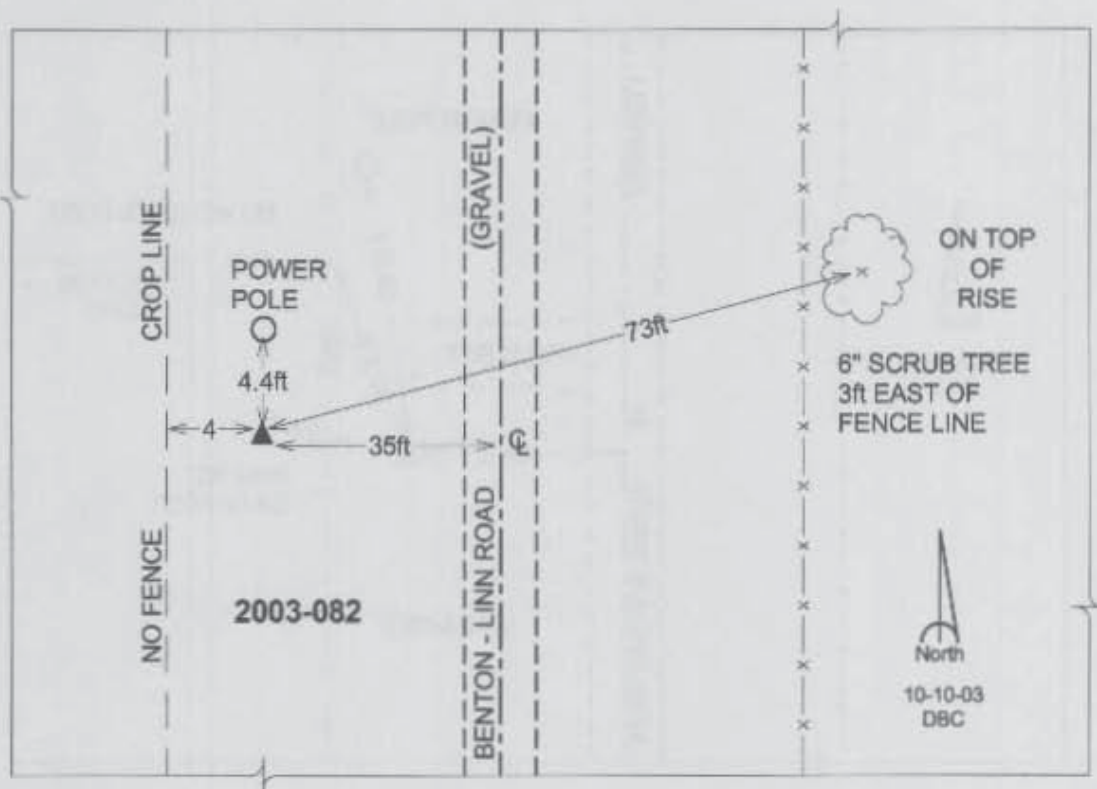
Northing: **3492677.88**sft Easting: **5373309.05**sft

Orthometric Height: **851.41**sft Ellipsoid Height: **747.67**sft **Geoid03**

Latitude: **42°04'08.75226"N** Longitude: **91°50'06.01467"W**

Mapping Angle: **1°07'42"** Combination Scale Factor: **0.99996388**

Monument Type: Berntsen Top Security Rod Monument with a 2-1/2" dia. domed survey cap and permanent magnet encased in a 5" dia. PVC pipe with a NGS style aluminum access cover.



Prepared by DCI and GBC for Linn Co. and the City of Cedar Rapids, Iowa (Revised 08-05-05).