

Linn County and the City of Cedar Rapids, Iowa
 Iowa North Zone (1401)
 Horiz. Datum: NAD83(1996)
 Vert. Datum: NAVD 1988
 US Survey Feet
2005

Point Name: **BenCo 2003-83**

Designation: BENTON CO. GPS CONTROL PT. 2003-083, set by DCI for Benton Co. in 2003

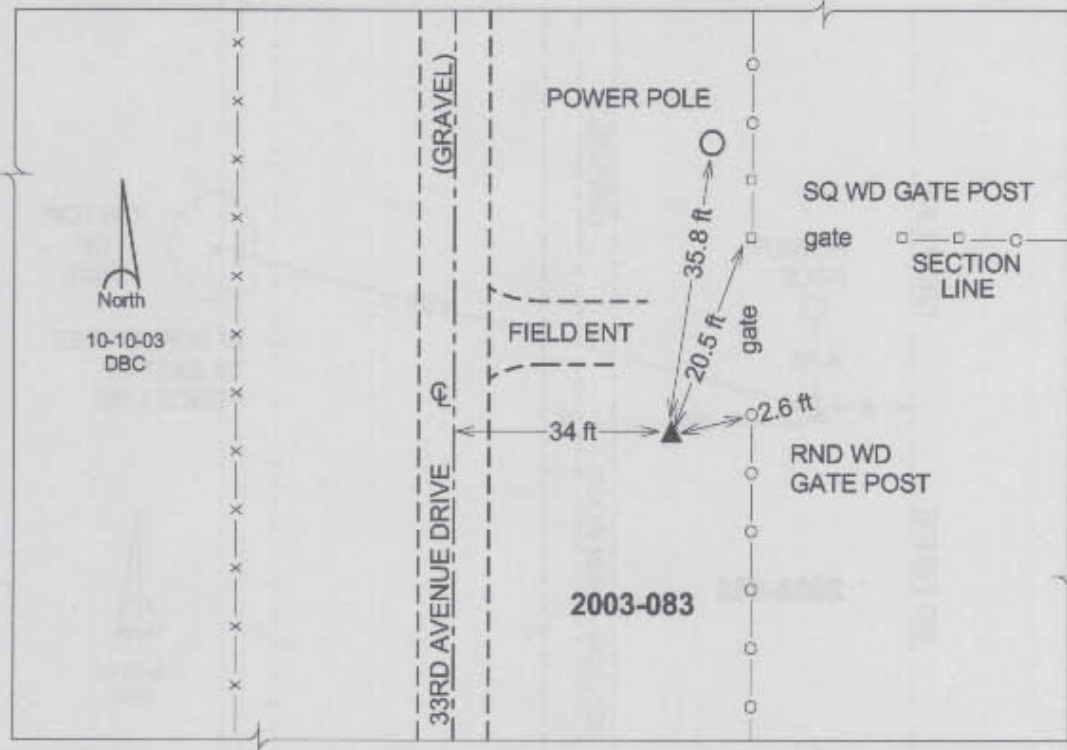
Northing: **3527958.20**sft Easting: **5370324.10**sft

Orthometric Height: **826.31**sft Ellipsoid Height: **723.67**sft **Geoid03**

Latitude: **42°09'57.79100"N** Longitude: **91°50'36.41758"W**

Mapping Angle: **1°07'22"** Combination Scale Factor: **0.99994892**

Monument Type: Berntsen Top Security Rod Monument with a 2-1/2" dia. domed survey cap and permanent magnet encased in a 5"dia. PVC pipe with a NGS style aluminum access cover.



Prepared by DCI and GBC for Linn Co. and the City of Cedar Rapids, Iowa (Revised 08-05-05).