

Linn County and the City of Cedar Rapids, Iowa  
Iowa North Zone (1401)  
Horiz. Datum: NAD83(1996)  
Vert. Datum: NAVD 1988  
US Survey Feet  
2005

Point Name: **BenCo 2003-84**

**Designation:** BENTON CO. GPS CONTROL PT. 2003-084, set by DCI for Benton Co. in 2003

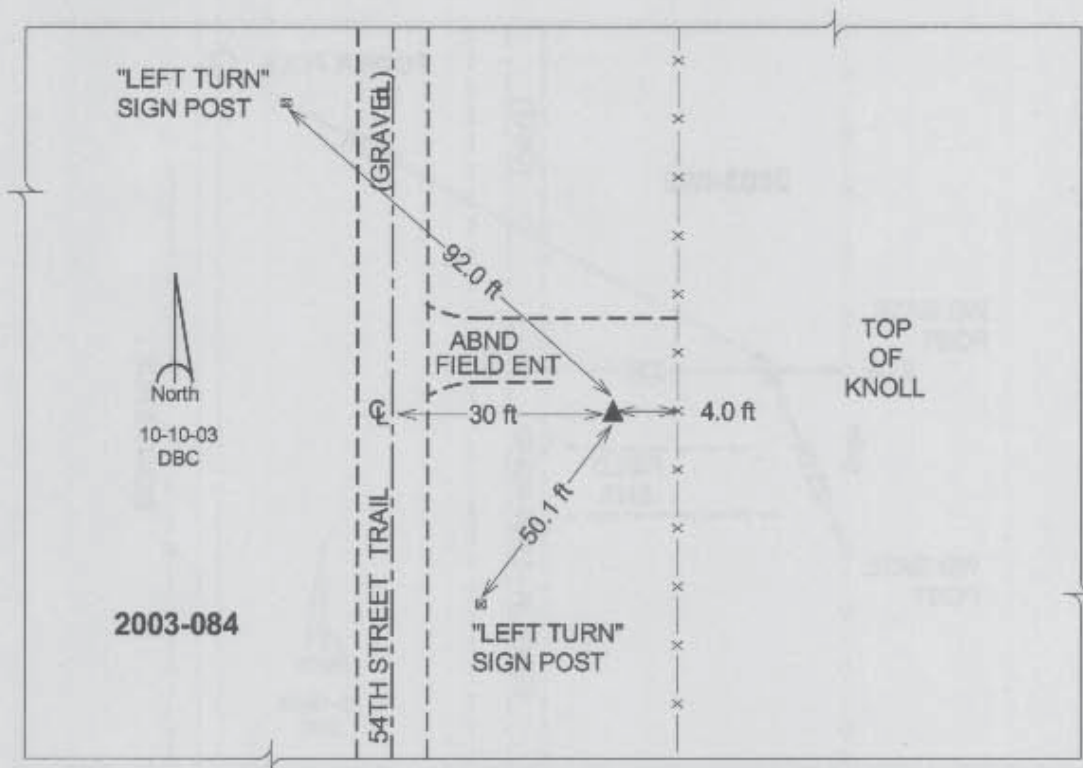
Northing: **3549011.73sft** Easting: **5372932.97sft**

Orthometric Height: **830.94sft** Ellipsoid Height: **728.80sft** **Geoid03**

Latitude: **42°13'25.22713"N** Longitude: **91°49'56.26677"W**

Mapping Angle: **1°07'49"** Combination Scale Factor: **0.99994043**

**Monument Type:** Berntsen Top Security Rod Monument with a 2-1/2" dia. domed survey cap and permanent magnet encased in a 5"dia. PVC pipe with a NGS style aluminum access cover.



Prepared by DCI and GBC for Linn Co. and the City of Cedar Rapids, Iowa (Revised 08-05-05).