

Linn County and the City of Cedar Rapids, Iowa
Iowa North Zone (1401)
Horiz. Datum: NAD83(1996)
Vert. Datum: NAVD 1988
US Survey Feet
2005

Point Name: **BenCo 2003-85**

Designation: BENTON CO. GPS CONTROL PT. 2003-085, set by DCI for Benton Co. in 2003

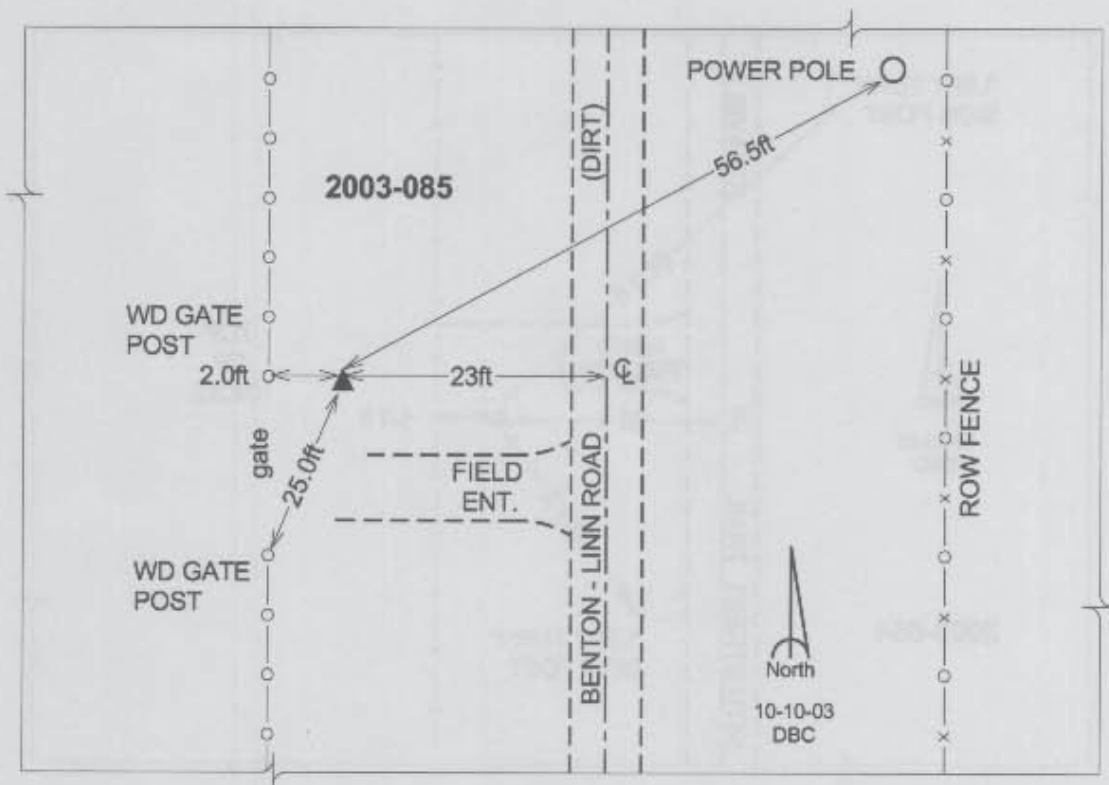
Northing: **3563602.52sft** Easting: **5372774.52sft**

Orthometric Height: **854.36sft** Ellipsoid Height: **752.58sft** **Geoid03**

Latitude: **42°15'49.36876"N** Longitude: **91°49'54.54587"W**

Mapping Angle: **1°07'50"** Combination Scale Factor: **0.99993417**

Monument Type: Bemtsen Top Security Rod Monument with a 2-1/2" dia. domed survey cap and permanent magnet encased in a 5"dia. PVC pipe with a NGS style aluminum access cover.



Prepared by DCI and GBC for Linn Co. and the City of Cedar Rapids, Iowa (Revised 08-05-05).