

**Linn County and the City of Cedar Rapids, Iowa**  
Iowa North Zone (1401)  
Horiz. Datum: NAD83(1996)  
Vert. Datum: NAVD 1988  
US Survey Feet  
**2005**

Point Name: **C09**

**Designation:** City of Marion core control point C09, set by Snyder & Assoc in 2004

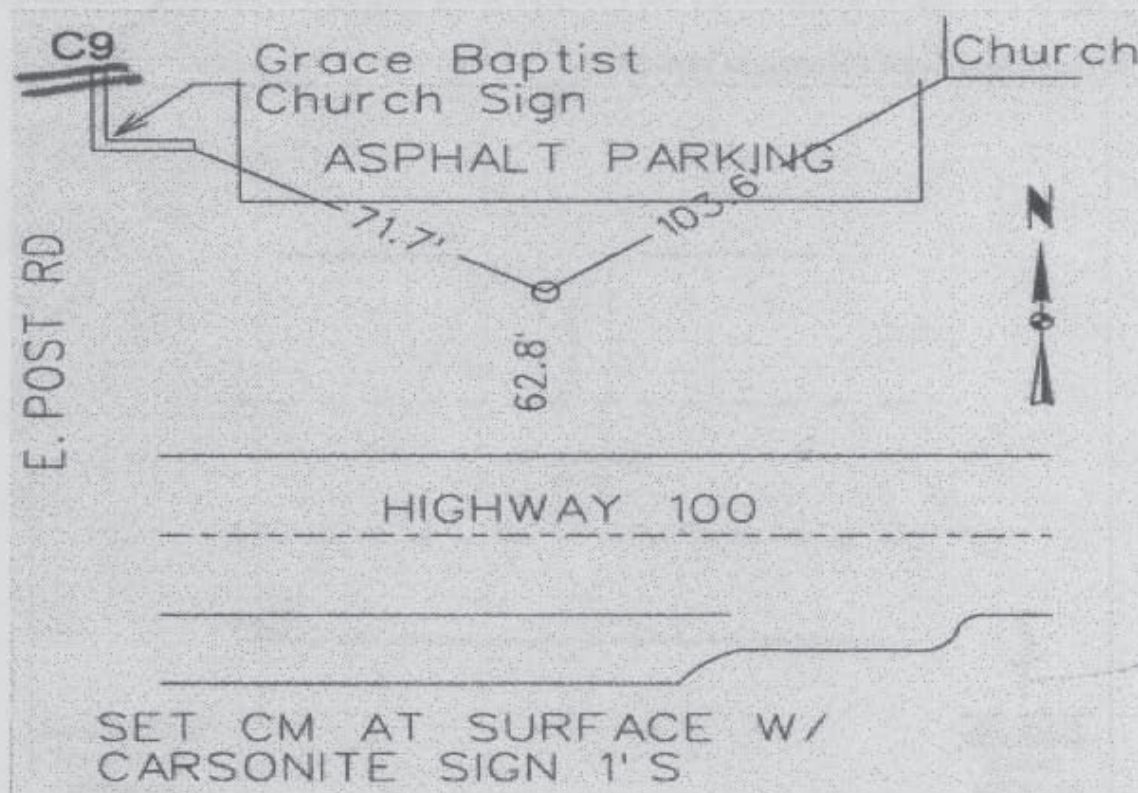
Northing: **3474548.68sft** Easting: **5437932.28sft**

Orthometric Height: **852.51sft** Ellipsoid Height: **746.93sft** **Geoid03**

Latitude: **42°00'56.23241"N** Longitude: **91°35'54.83284"W**

Mapping Angle: **1°17'19"** Combination Scale Factor: **0.99997402**

**Monument Type:** 6"dia. poured in-place concrete monument with a brass survey cap



*Prepared by DCI and GBC for Linn Co. and the City of Cedar Rapids, Iowa (Revised 08-05-05).*