

Linn County and the City of Cedar Rapids, Iowa  
Iowa North Zone (1401)  
Horiz. Datum: NAD83(1996)  
Vert. Datum: NAVD 1988  
US Survey Feet  
2005

Point Name: C12

Designation: City of Marion core control point C12, set by Snyder & Assoc in 2004

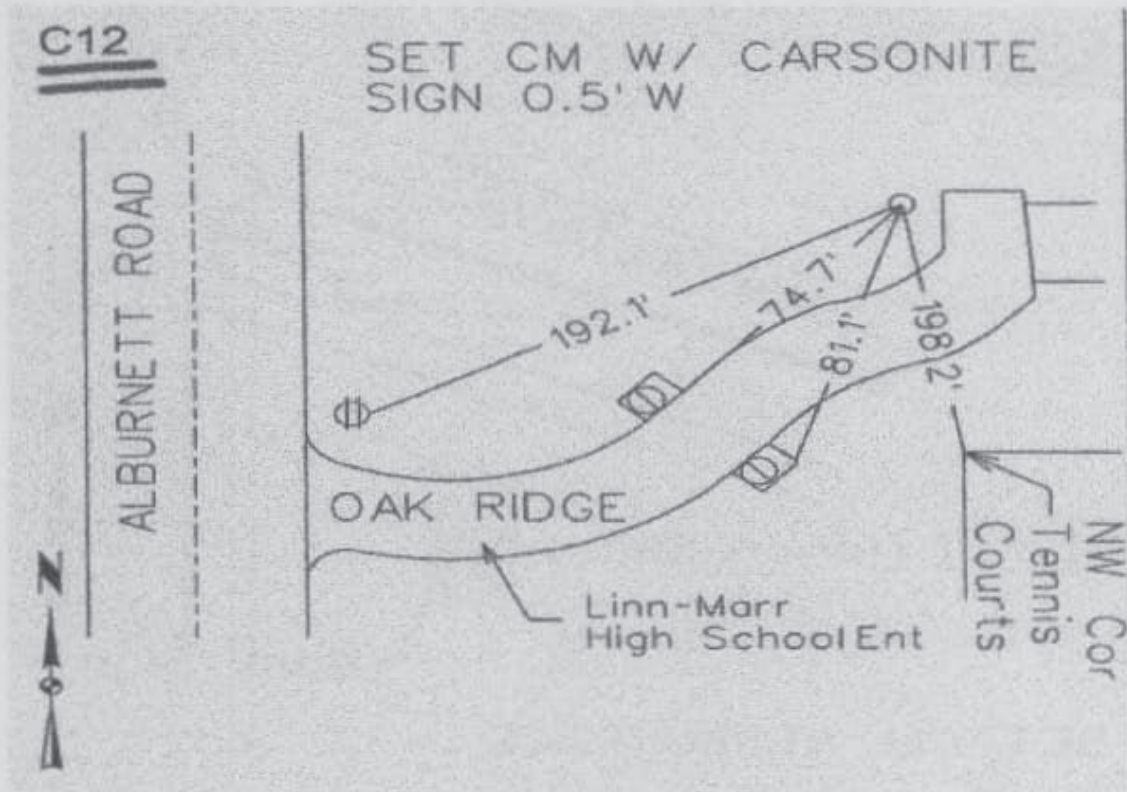
Northing: 3494232.91sft Easting: 5432151.56sft

Orthometric Height: 836.42sft Ellipsoid Height: 731.33sft Geoid03

Latitude: 42°04'11.91770"N Longitude: 91°37'05.58830"W

Mapping Angle: 1°16'31" Combination Scale Factor: 0.99996451

Monument Type: 6"dia. poured in-place concrete monument with a brass survey cap



Prepared by DCI and GBC for Linn Co. and the City of Cedar Rapids, Iowa (Revised 08-05-05).