

Linn County and the City of Cedar Rapids, Iowa
 Iowa North Zone (1401)
 Horiz. Datum: NAD83(1996)
 Vert. Datum: NAVD 1988
 US Survey Feet
2005

Point Name: **C18**

Designation: City of Marion core control point C18, set by Snyder & Assoc in 2004

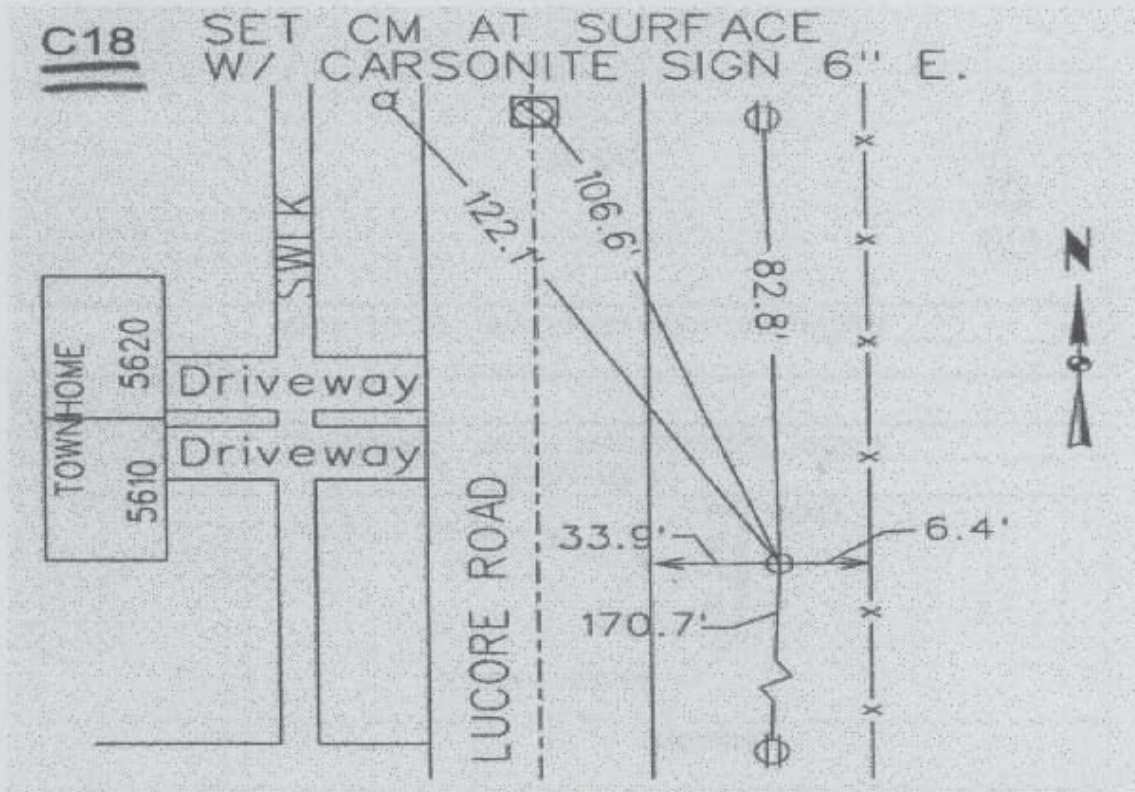
Northing: **3496928.70**sft Easting: **5442739.07**sft

Orthometric Height: **862.97**sft Ellipsoid Height: **757.70**sft **Geoid03**

Latitude: **42°04'36.18990"N** Longitude: **91°34'44.43660"W**

Mapping Angle: **1°18'07"** Combination Scale Factor: **0.99996204**

Monument Type: 6"dia. poured in-place concrete monument with a brass survey cap



Prepared by DCI and GBC for Linn Co. and the City of Cedar Rapids, Iowa (Revised 08-05-05).