

Linn County and the City of Cedar Rapids, Iowa
 Iowa North Zone (1401)
 Horiz. Datum: NAD83(1996)
 Vert. Datum: NAVD 1988
 US Survey Feet
2005

Point Name: **CID 006**

Designation: CID 6, Set by others.

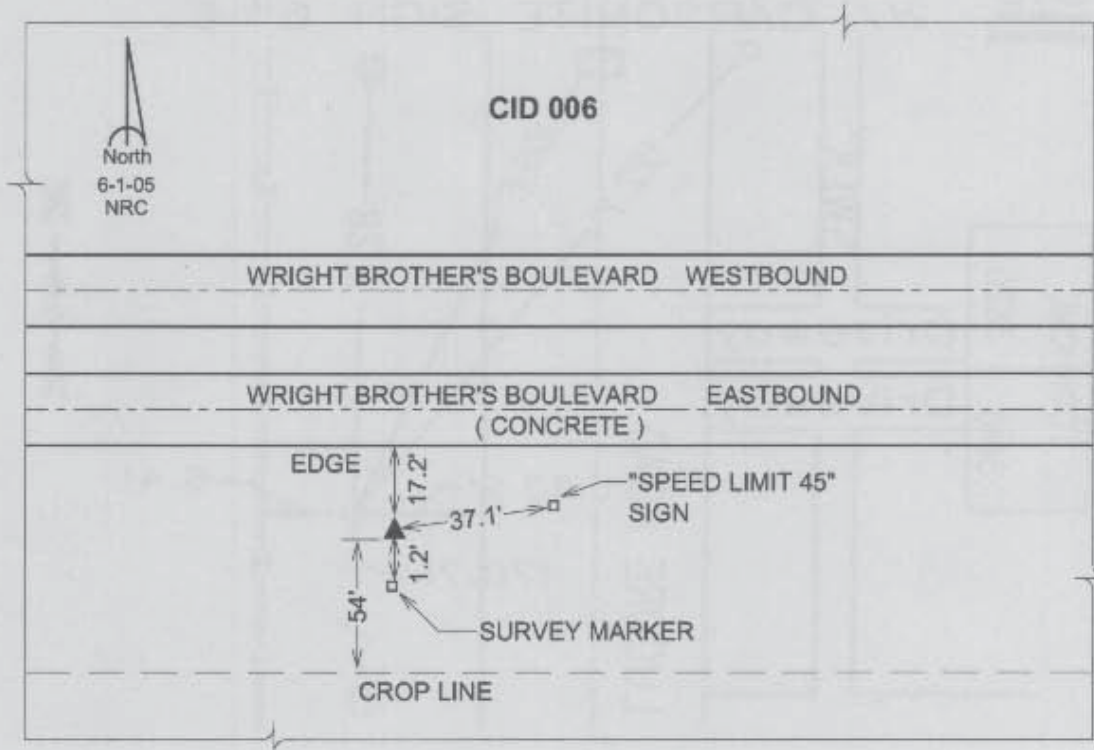
Northing: **3429637.12sft** Easting: **5409326.35sft**

Orthometric Height: **860.65sft** Ellipsoid Height: **754.80sft** **Geoid03**

Latitude: **41°53'38.84141"N** Longitude: **91°42'26.31131"W**

Mapping Angle: **1°12'54"** Combination Scale Factor: **0.99999978**

Monument Type: Rod monument with an aluminum cap stamped "CID 6" encased in a 5" dia. PVC pipe with a NGS style aluminum access cover.



Prepared by DCI and GBC for Linn Co. and the City of Cedar Rapids, Iowa (Revised 08-05-05).