

Linn County and the City of Cedar Rapids, Iowa
 Iowa North Zone (1401)
 Horiz. Datum: NAD83(1996)
 Vert. Datum: NAVD 1988
 US Survey Feet
2005

Point Name: **CR 10A**

Designation: Station 10A, Set by Aero-Metric for the City of Cedar Rapids in 1995

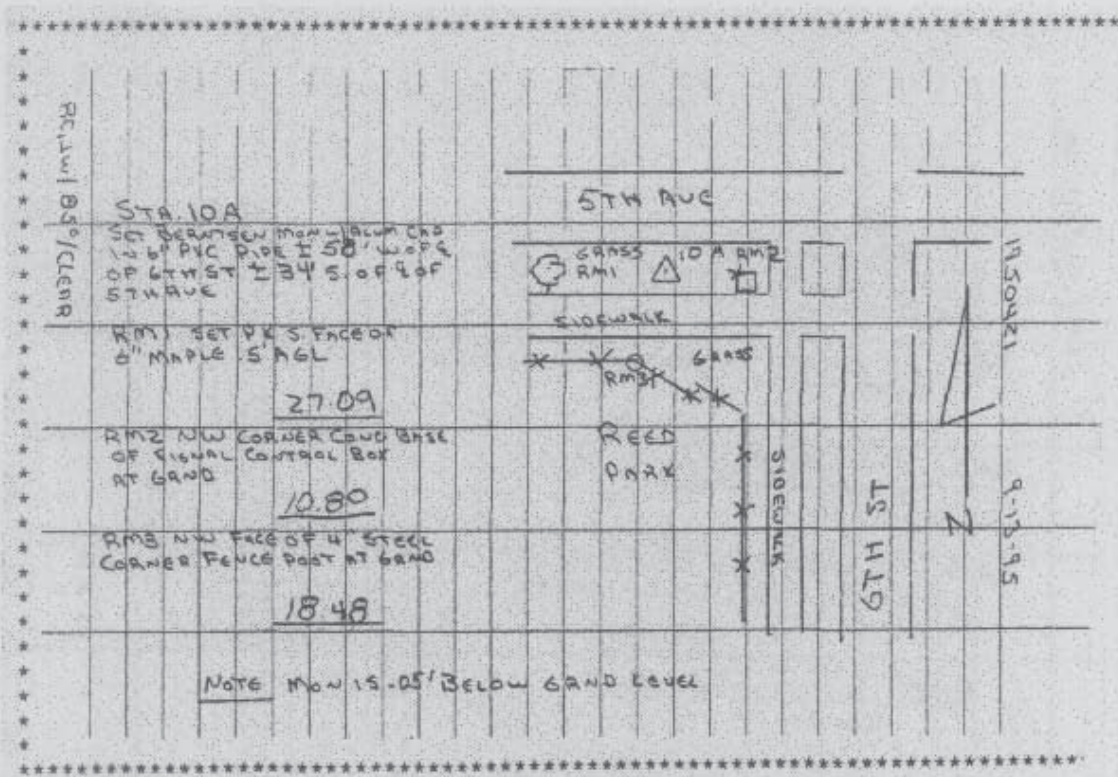
Northing: **3457651.10sft** Easting: **5416879.77sft**

Orthometric Height: **727.30sft** Ellipsoid Height: **621.82sft** **Geoid03**

Latitude: **41°58'13.92590"N** Longitude: **91°40'38.48050"W**

Mapping Angle: **1°14'07"** Combination Scale Factor: **0.99998917**

Monument Type: Berntsen monument with aluminum cap set in an open 6" dia. PVC pipe



Prepared by DCI and GBC for Linn Co. and the City of Cedar Rapids, Iowa (Revised 08-05-05).