

Linn County and the City of Cedar Rapids, Iowa
 Iowa North Zone (1401)
 Horiz. Datum: NAD83(1996)
 Vert. Datum: NAVD 1988
 US Survey Feet
2005

Point Name: **CR 11A**

Designation: Station 11A, Set by Aero-Metric for the City of Cedar Rapids in 1995

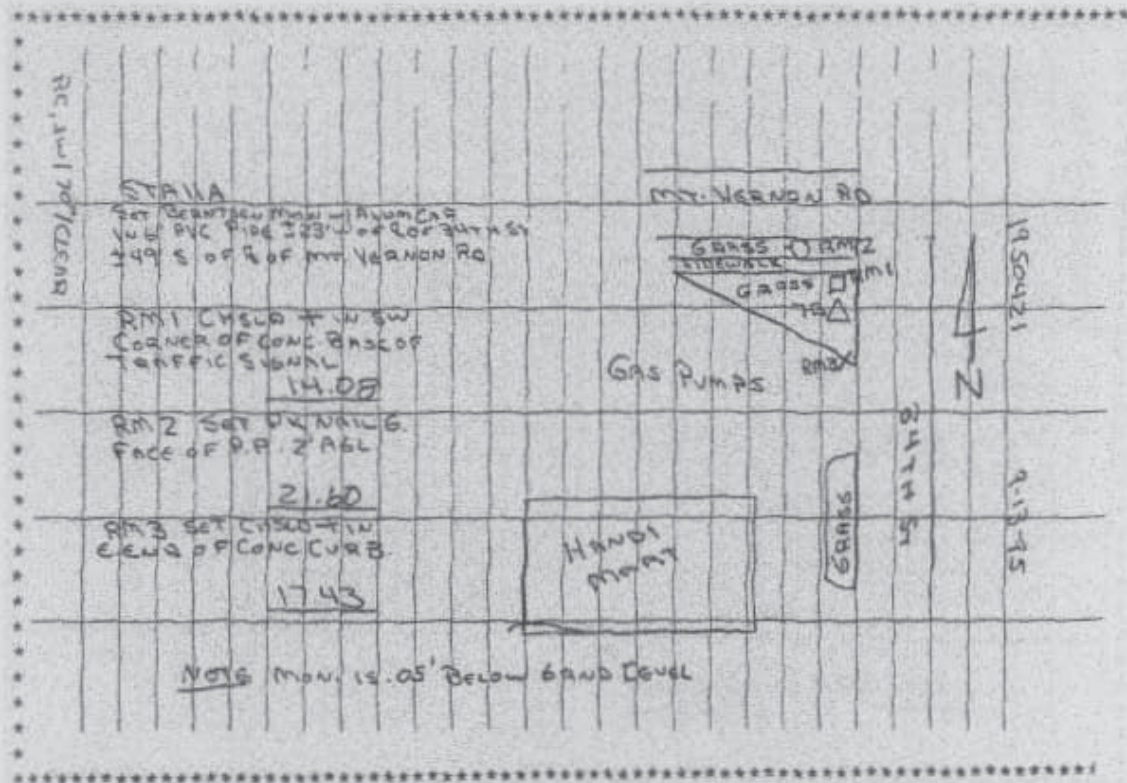
Northing: **3460241.46**sft Easting: **5432824.51**sft

Orthometric Height: **832.46**sft Ellipsoid Height: **726.75**sft **Geoid03**

Latitude: **41°58'36.05883"N** Longitude: **91°37'06.69745"W**

Mapping Angle: **1°16'31"** Combination Scale Factor: **0.99998287**

Monument Type: Berntsen monument with aluminum cap set in an open 6" dia. PVC pipe



Prepared by DCI and GBC for Linn Co. and the City of Cedar Rapids, Iowa (Revised 08-05-05).