

Linn County and the City of Cedar Rapids, Iowa
 Iowa North Zone (1401)
 Horiz. Datum: NAD83(1996)
 Vert. Datum: NAVD 1988
 US Survey Feet
 2005

Point Name: **CR 13B**

Designation: Station 13B, Set by Aero-Metric for the City of Cedar Rapids in 1995

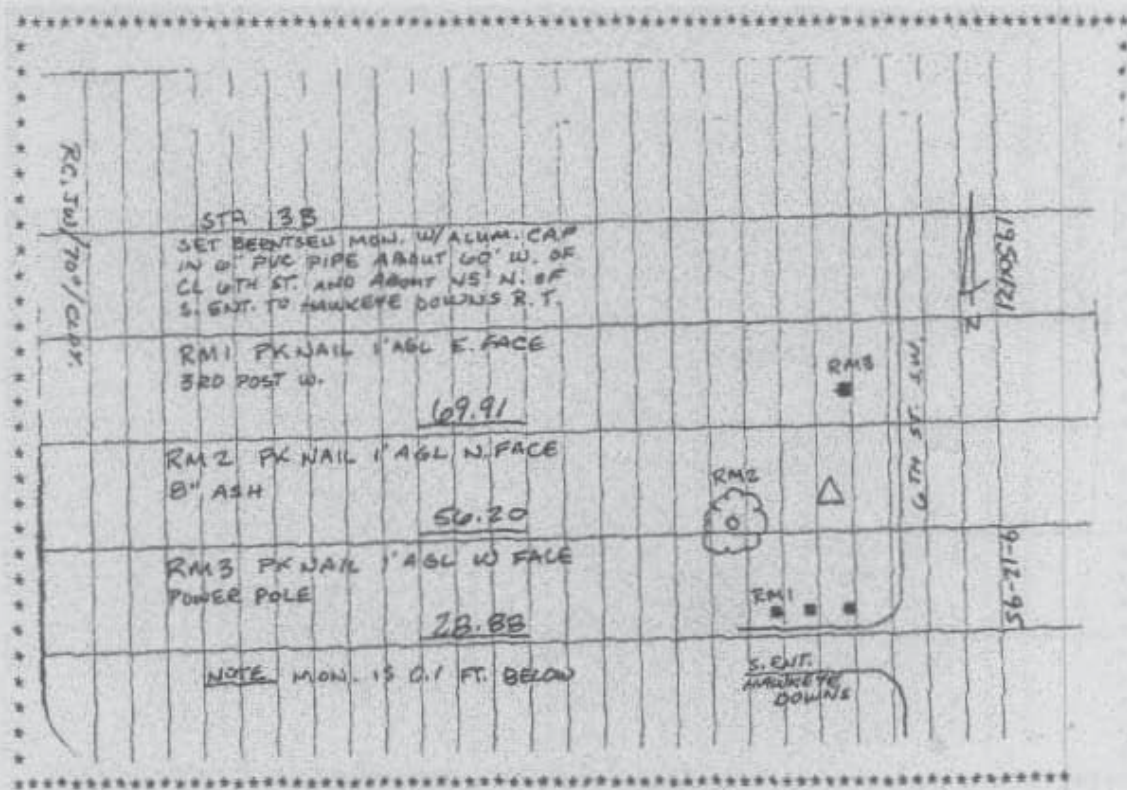
Northing: **3443845.96**sft Easting: **5417407.15**sft

Orthometric Height: **725.23**sft Ellipsoid Height: **619.51**sft **Geoid03**

Latitude: **41°55'57.46764"N** Longitude: **91°40'35.44228"W**

Mapping Angle: **1°14'09"** Combination Scale Factor: **0.99999747**

Monument Type: Berntsen monument with aluminum cap set in an open 6" dia. PVC pipe



Prepared by DCI and GBC for Linn Co. and the City of Cedar Rapids, Iowa (Revised 08-05-05).