

**Linn County and the City of Cedar Rapids, Iowa**  
 Iowa North Zone (1401)  
 Horiz. Datum: NAD83(1996)  
 Vert. Datum: NAVD 1988  
 US Survey Feet  
 2005

Point Name: CR 14A

**Designation:** Station 14A, Set by Aero-Metric for the City of Cedar Rapids in 1995

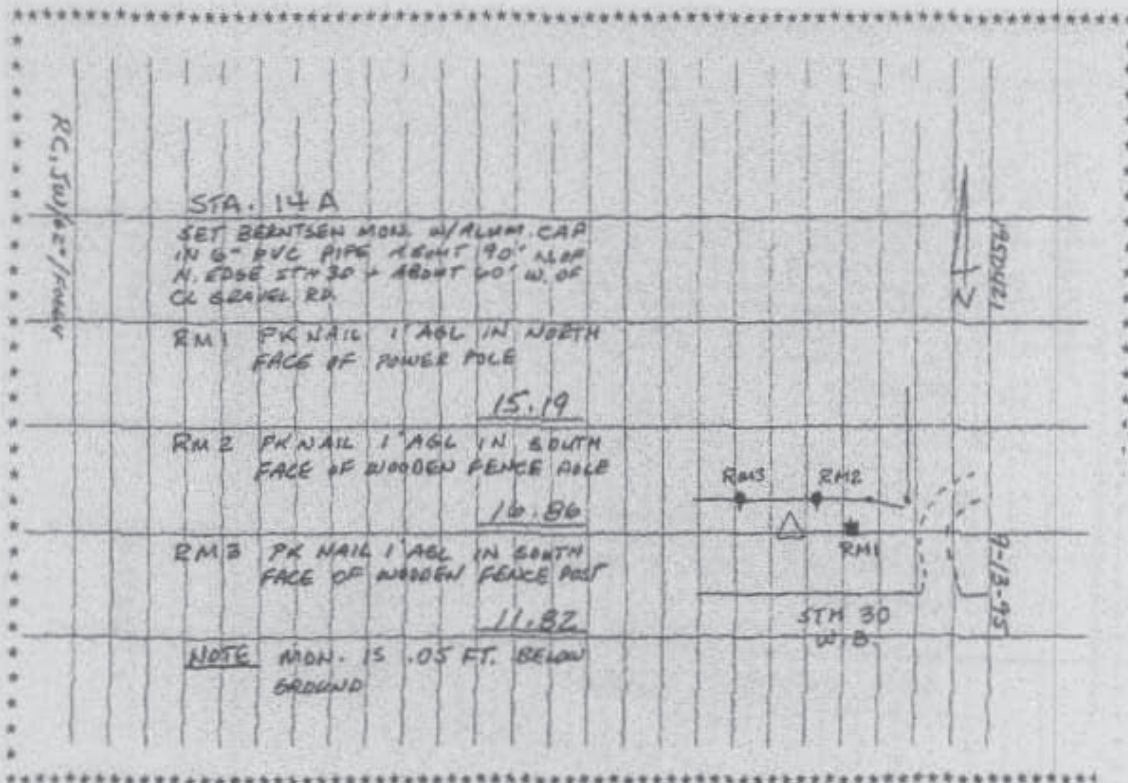
Northing: 3442059.24sft Easting: 5433250.89sft

Orthometric Height: 838.45sft Ellipsoid Height: 732.48sft Geoid03

Latitude: 41°55'36.39176"N Longitude: 91°37'06.41116"W

Mapping Angle: 1°16'31" Combination Scale Factor: 0.99999338

**Monument Type:** Bemtsen monument with aluminum cap set in an open 6" dia. PVC pipe



Prepared by DCI and GBC for Linn Co. and the City of Cedar Rapids, Iowa (Revised 08-05-05).