

Linn County and the City of Cedar Rapids, Iowa
 Iowa North Zone (1401)
 Horiz. Datum: NAD83(1996)
 Vert. Datum: NAVD 1988
 US Survey Feet
 2005

Point Name: CR 2A

Designation: Station 2A, Set by Aero-Metric for the City of Cedar Rapids in 1995

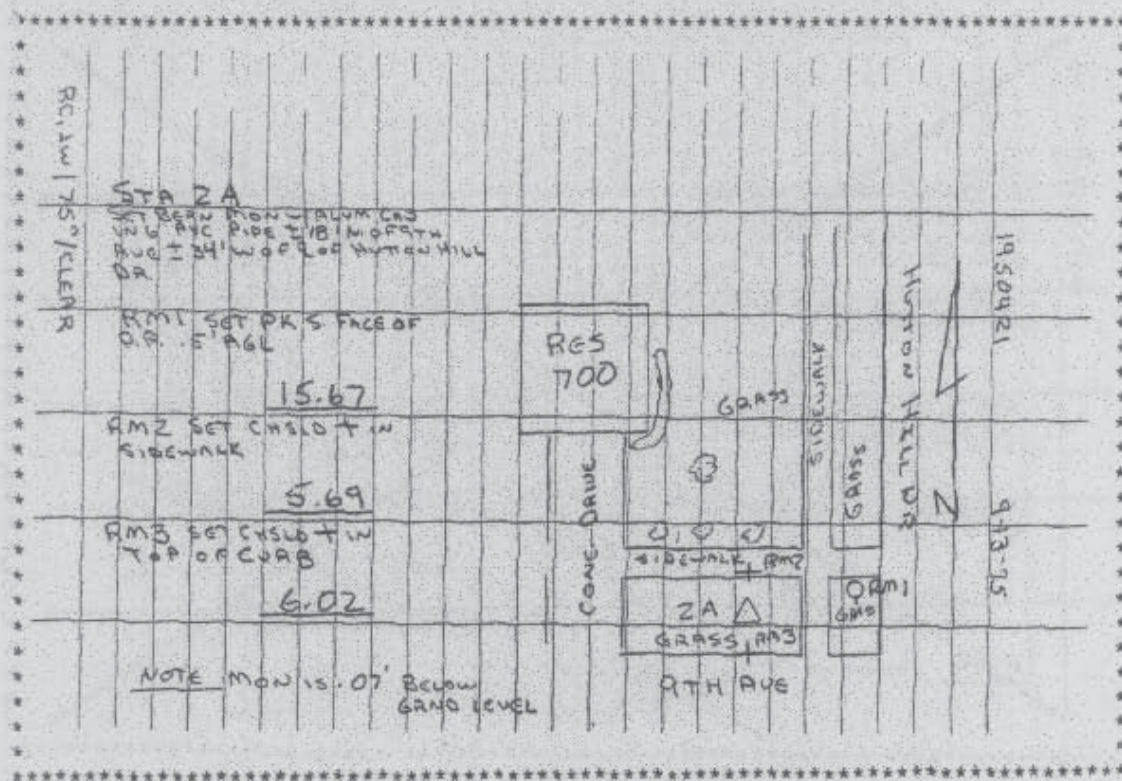
Northing: 3481680.01sft Easting: 5432292.25sft

Orthometric Height: 829.93sft Ellipsoid Height: 724.60sft Geoid03

Latitude: 42°02'07.91006"N Longitude: 91°37'07.42681"W

Mapping Angle: 1°16'30" Combination Scale Factor: 0.99997122

Monument Type: Berntsen monument with aluminum cap set in an open 6" dia. PVC pipe



Prepared by DCI and GBC for Linn Co. and the City of Cedar Rapids, Iowa (Revised 08-05-05).