

Linn County and the City of Cedar Rapids, Iowa
 Iowa North Zone (1401)
 Horiz. Datum: NAD83(1996)
 Vert. Datum: NAVD 1988
 US Survey Feet
2005

Point Name: **CR 2B**

Designation: Station 2B, Set by Aero-Metric for the City of Cedar Rapids in 1995

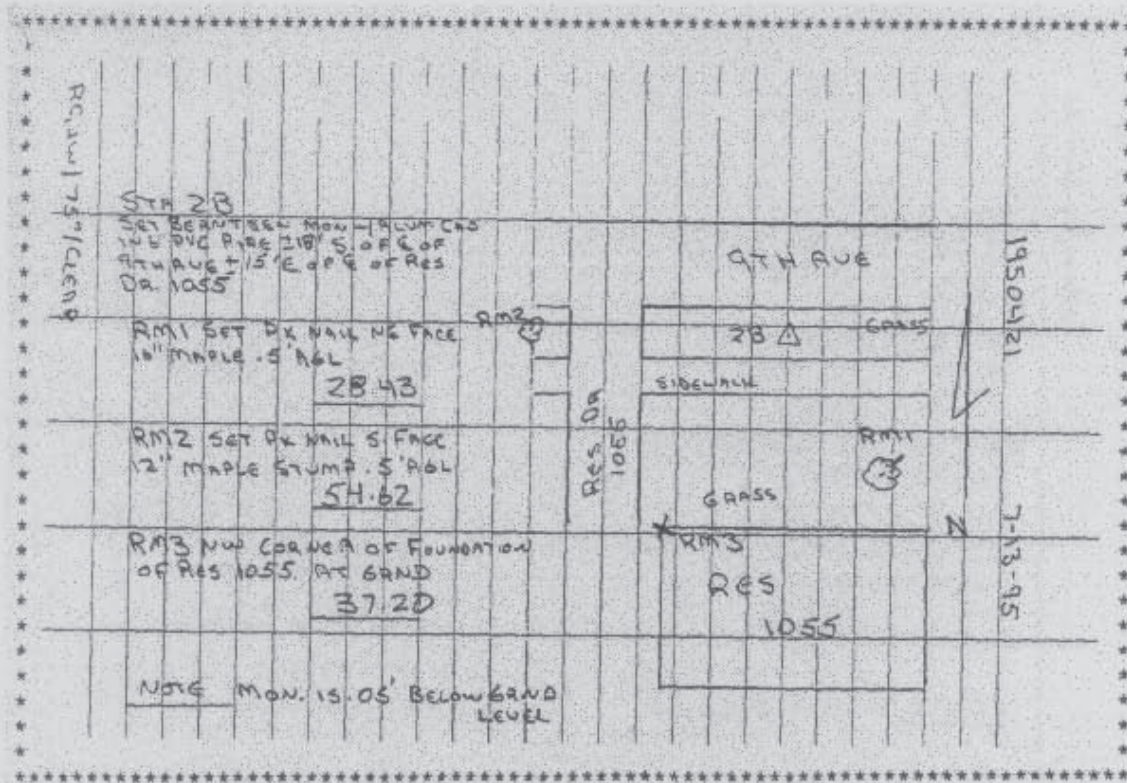
Northing: **3481782.63sft** Easting: **5431171.46sft**

Orthometric Height: **846.55sft** Ellipsoid Height: **741.25sft** **Geoid03**

Latitude: **42°02'09.16967"N** Longitude: **91°37'22.24497"W**

Mapping Angle: **1°16'20"** Combination Scale Factor: **0.99997036**

Monument Type: Berntsen monument with aluminum cap set in an open 6" dia. PVC pipe



Prepared by DCI and GBC for Linn Co. and the City of Cedar Rapids, Iowa (Revised 08-05-05).