

Linn County and the City of Cedar Rapids, Iowa
 Iowa North Zone (1401)
 Horiz. Datum: NAD83(1996)
 Vert. Datum: NAVD 1988
 US Survey Feet
 2005

Point Name: **CR 3B**

Designation: Station 3B, Set by Aero-Metric for the City of Cedar Rapids in 1995

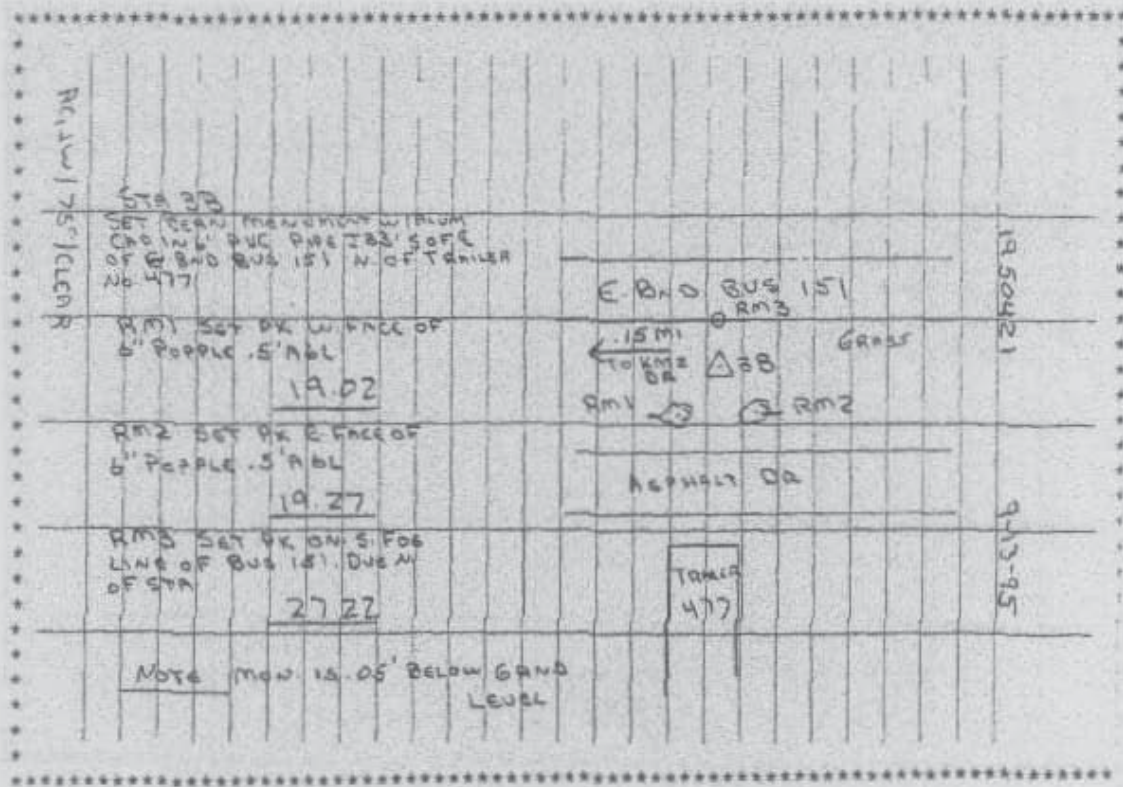
Northing: **3482075.37sft** Easting: **5446411.25sft**

Orthometric Height: **823.68sft** Ellipsoid Height: **718.07sft** **Geoid03**

Latitude: **42°02'08.66826"N** Longitude: **91°34'00.25971"W**

Mapping Angle: **1°18'37"** Combination Scale Factor: **0.99997149**

Monument Type: Berntsen monument with aluminum cap set in an open 6" dia. PVC pipe



Prepared by DCI and GBC for Linn Co. and the City of Cedar Rapids, Iowa (Revised 08-05-05).