

Linn County and the City of Cedar Rapids, Iowa
 Iowa North Zone (1401)
 Horiz. Datum: NAD83(1996)
 Vert. Datum: NAVD 1988
 US Survey Feet
 2005

Point Name: **CR 4A**

Designation: Station 4A, Set by Aero-Metric for the City of Cedar Rapids in 1995

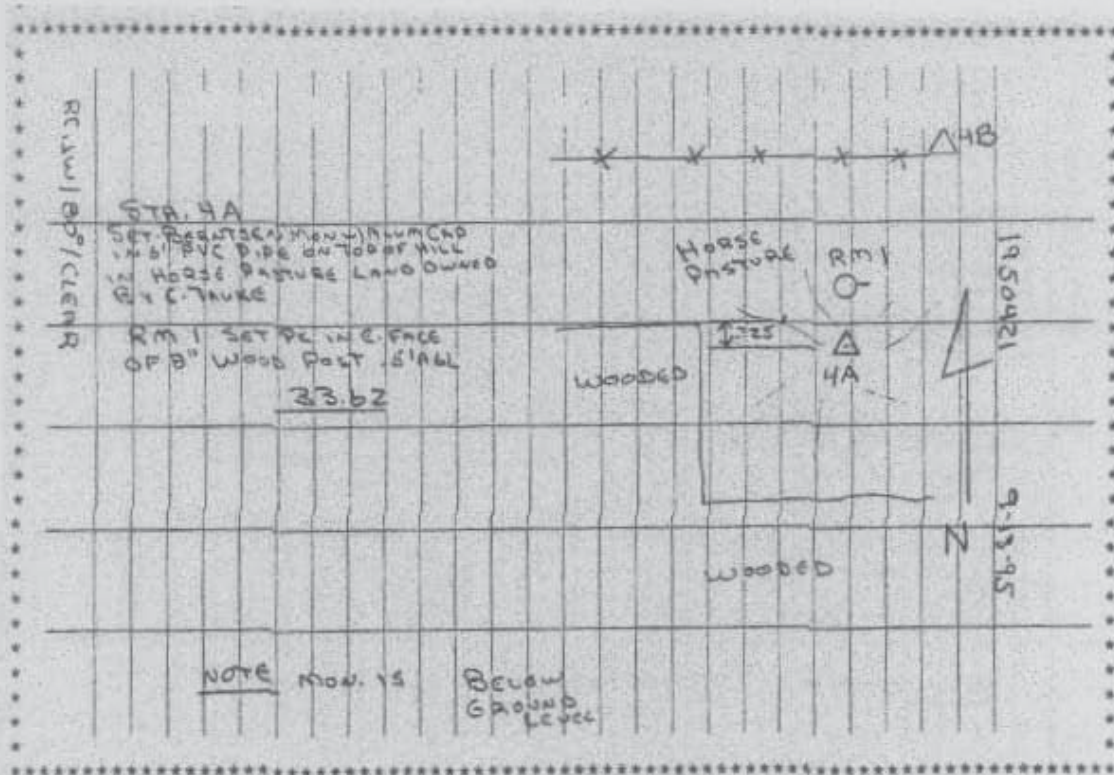
Northing: **3479515.00**sft Easting: **5405877.47**sft

Orthometric Height: **828.22**sft Ellipsoid Height: **723.45**sft **Geoid03**

Latitude: **42°01'52.18364"N** Longitude: **91°42'57.98662"W**

Mapping Angle: **1°12'32"** Combination Scale Factor: **0.99997211**

Monument Type: Berntsen monument with aluminum cap set in an open 6" dia. PVC pipe



Prepared by DCI and GBC for Linn Co. and the City of Cedar Rapids, Iowa (Revised 08-05-05).