

Linn County and the City of Cedar Rapids, Iowa
 Iowa North Zone (1401)
 Horiz. Datum: NAD83(1996)
 Vert. Datum: NAVD 1988
 US Survey Feet
 2005

Point Name: CR 5A

Designation: Station 5A, Set by Aero-Metric for the City of Cedar Rapids in 1995

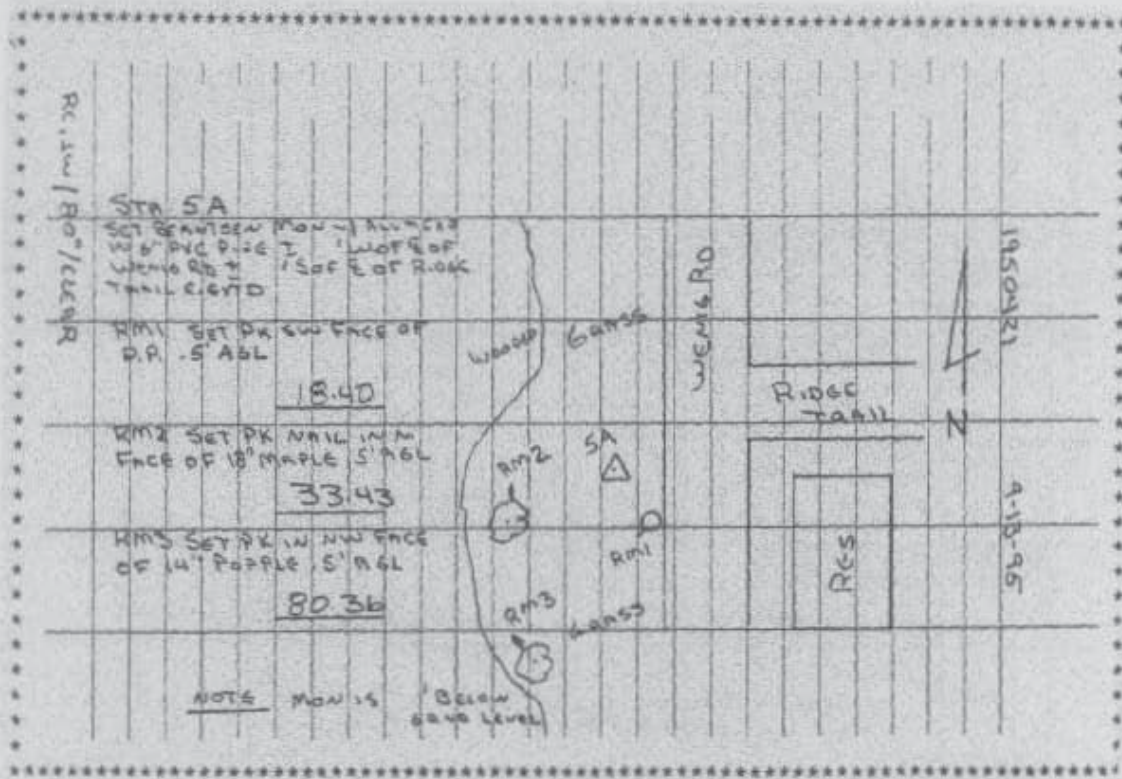
Northing: 3472267.68sft Easting: 5416490.12sft

Orthometric Height: 851.31sft Ellipsoid Height: 746.13sft Geoid03

Latitude: 42°00'38.36921"N Longitude: 91°40'39.46669"W

Mapping Angle: 1°14'06" Combination Scale Factor: 0.99997504

Monument Type: Berntsen monument with aluminum cap set in an open 6" dia. PVC pipe



Prepared by DCI and GBC for Linn Co. and the City of Cedar Rapids, Iowa (Revised 08-05-05).