

Linn County and the City of Cedar Rapids, Iowa
 Iowa North Zone (1401)
 Horiz. Datum: NAD83(1996)
 Vert. Datum: NAVD 1988
 US Survey Feet
2005

Point Name: **CR 6A**

Designation: Station 6A, Set by Aero-Metric for the City of Cedar Rapids in 1995

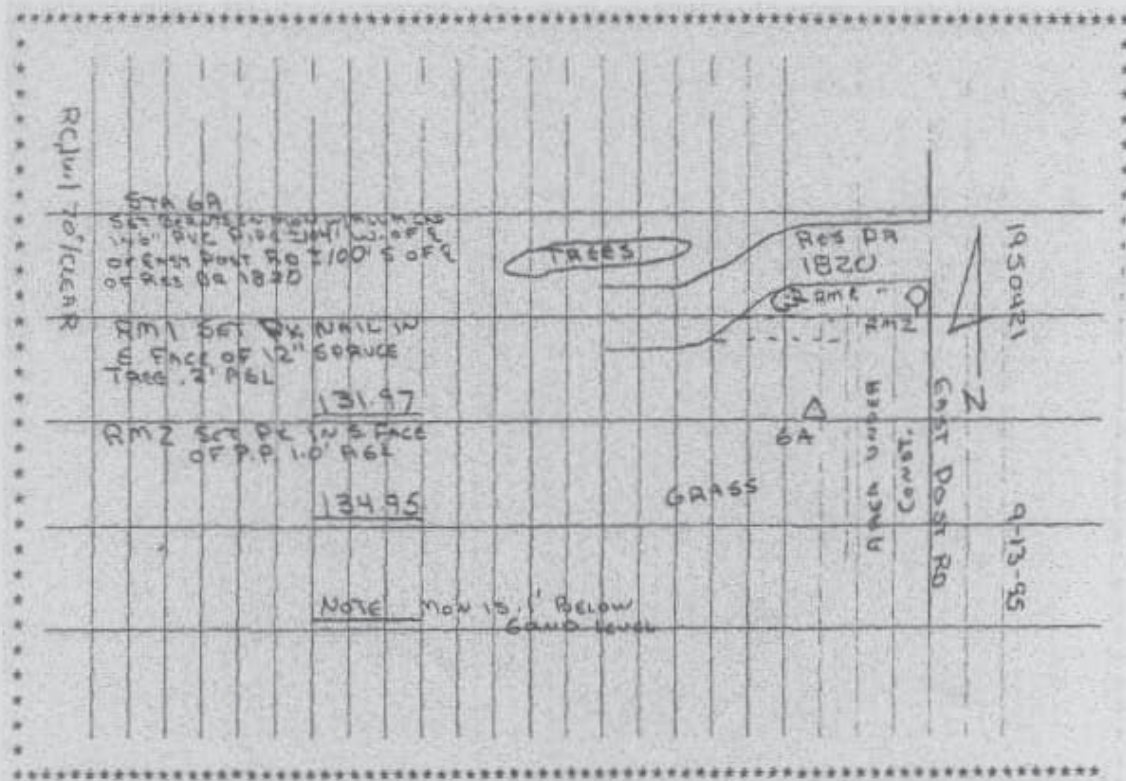
Northing: 3473579.28sft Easting: 5437661.34sft

Orthometric Height: 833.58sft Ellipsoid Height: 728.01sft **Geoid03**

Latitude: 42°00'46.71852"N Longitude: 91°35'58.70978"W

Mapping Angle: 1°17'17" Combination Scale Factor: 0.99997544

Monument Type: Berntsen monument with aluminum cap set in an open 6" dia. PVC pipe



Prepared by DCI and GBC for Linn Co. and the City of Cedar Rapids, Iowa (Revised 08-05-05).