

Linn County and the City of Cedar Rapids, Iowa
 Iowa North Zone (1401)
 Horiz. Datum: NAD83(1996)
 Vert. Datum: NAVD 1988
 US Survey Feet
 2005

Point Name: CR 6B

Designation: Station 6B, Set by Aero-Metric for the City of Cedar Rapids in 1995

Northing: 3474712.27sft Easting: 5437840.19sft

Orthometric Height: 851.25sft Ellipsoid Height: 745.68sft Geoid03

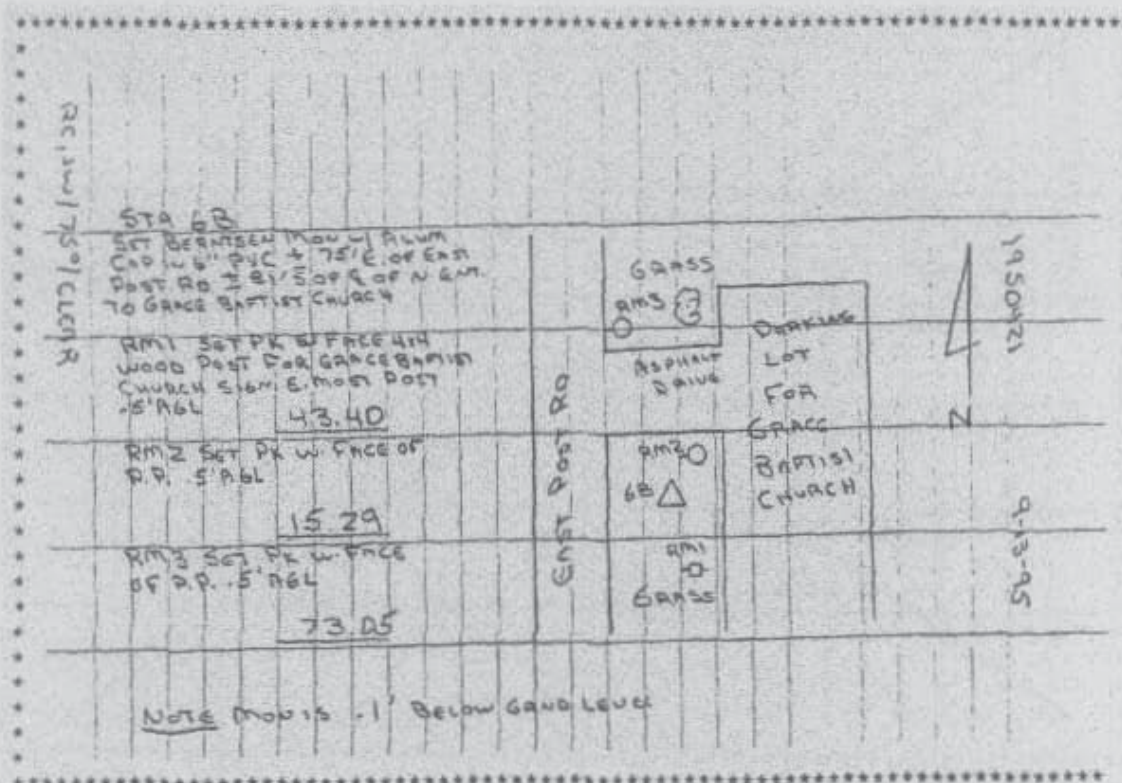
Latitude: 42°00'57.86853"N

Longitude: 91°35'56.00374"W

Mapping Angle: 1°17'18"

Combination Scale Factor: 0.99997399

Monument Type: Berntsen monument with aluminum cap set in an open 6" dia. PVC pipe



Prepared by DCI and GBC for Linn Co. and the City of Cedar Rapids, Iowa (Revised 08-05-05).