

Linn County and the City of Cedar Rapids, Iowa
 Iowa North Zone (1401)
 Horiz. Datum: NAD83(1996)
 Vert. Datum: NAVD 1988
 US Survey Feet
 2005

Point Name: CR 8B

Designation: Station 8B, Set by Aero-Metric for the City of Cedar Rapids in 1995

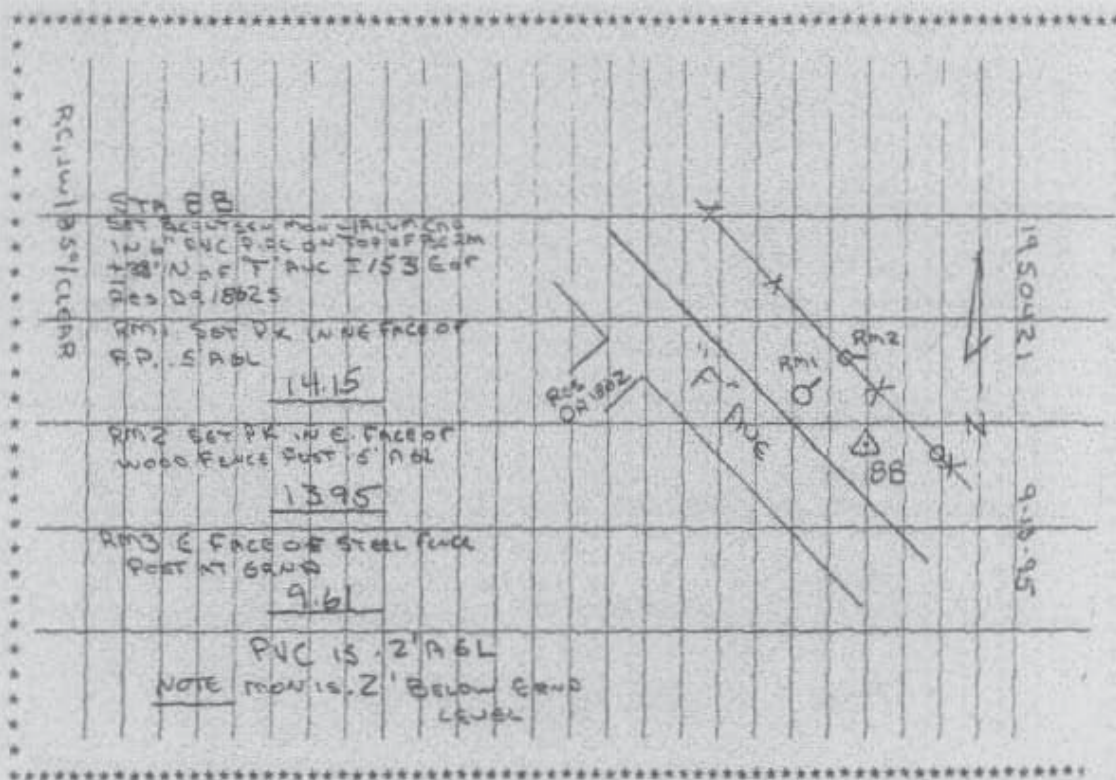
Northing: 3467021.71sft Easting: 5394853.06sft

Orthometric Height: 758.11sft Ellipsoid Height: 653.30sft Geoid03

Latitude: 41°59'51.06317"N Longitude: 91°45'27.44562"W

Mapping Angle: 1°10'51" Combination Scale Factor: 0.99998210

Monument Type: Berntsen monument with aluminum cap set in an open 6" dia. PVC pipe



Prepared by DCI and GBC for Linn Co. and the City of Cedar Rapids, Iowa (Revised 08-05-05).