

**Linn County and the City of Cedar Rapids, Iowa**  
 Iowa North Zone (1401)  
 Horiz. Datum: NAD83(1996)  
 Vert. Datum: NAVD 1988  
 US Survey Feet  
 2005

Point Name: **CR 9A**

**Designation:** Station 9A, Set by Aero-Metric for the City of Cedar Rapids in 1995

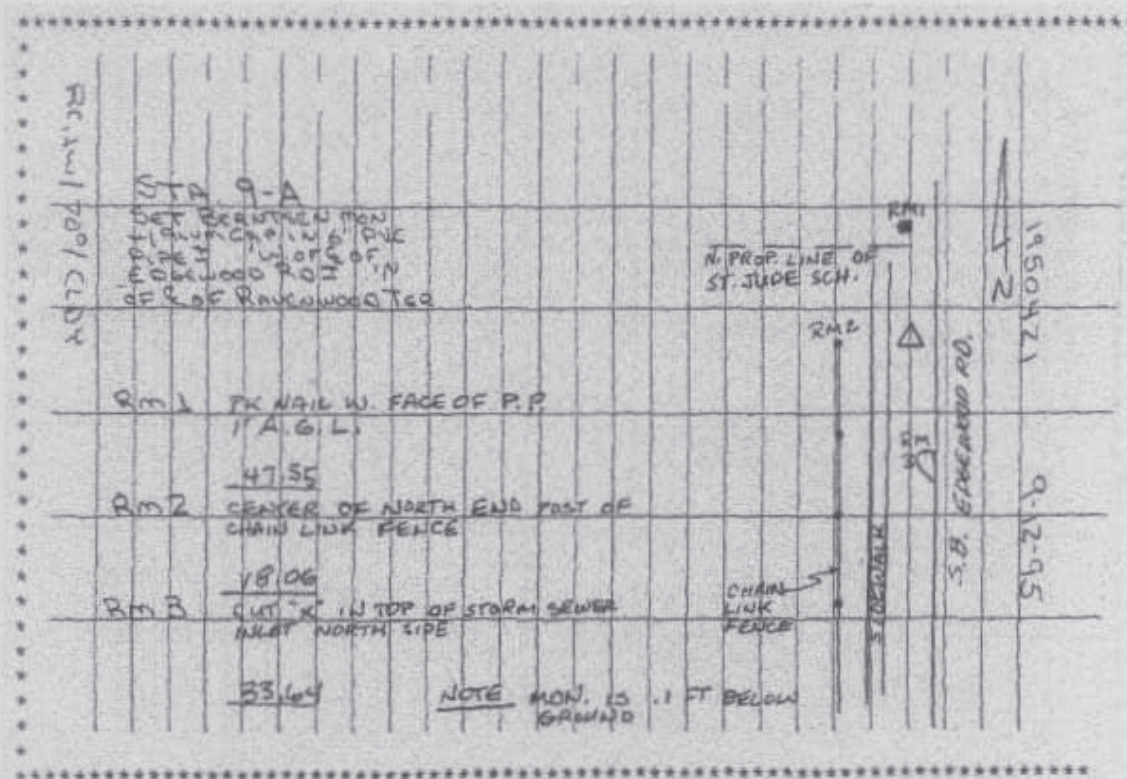
Northing: **3457184.49sft** Easting: **5406340.85sft**

Orthometric Height: **822.07sft** Ellipsoid Height: **716.80sft** Geoid03

Latitude: **41°58'11.53804"N** Longitude: **91°42'58.09101"W**

Mapping Angle: **1°12'32"** Combination Scale Factor: **0.99998478**

**Monument Type:** Berntsen monument with aluminum cap set in an open 6" dia. PVC pipe



Prepared by DCI and GBC for Linn Co. and the City of Cedar Rapids, Iowa (Revised 08-05-05).