

Linn County and the City of Cedar Rapids, Iowa
Iowa North Zone (1401)
Horiz. Datum: NAD83(1996)
Vert. Datum: NAVD 1988
US Survey Feet
2005

Point Name: **DelCo 2001-74**

Designation: DELAWARE CO. GPS CONTROL PT. 2001-074, set by ASI in 2001

Northing: **3577248.26sft** Easting: **5451805.54sft**

Orthometric Height: **907.87sft** Ellipsoid Height: **804.90sft** **Geoid03**

Latitude: **42°17'47.38275"N**

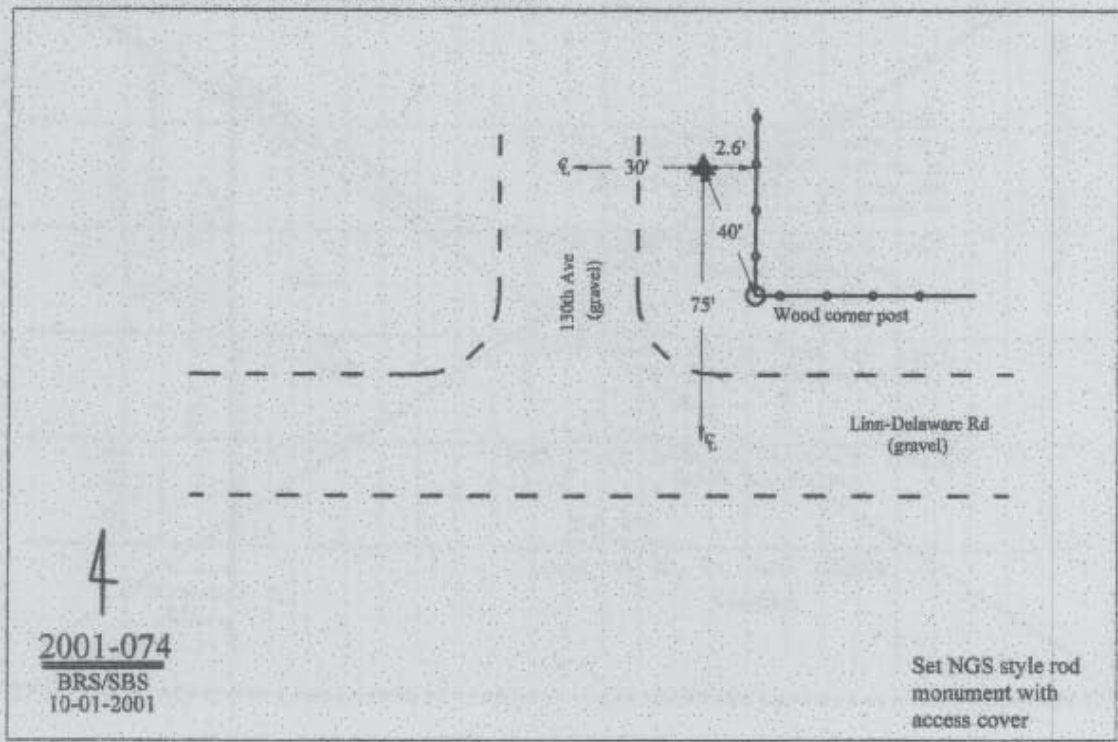
Longitude: **91°32'19.54122"W**

Mapping Angle: **1°19'45"**

Combination Scale Factor: **0.99992783**

Monument Type: Berntsen Top Security Rod Monument with a 2-1/2" dia. domed survey cap and permanent magnet encased in a 5"dia. PVC pipe with a NGS style aluminum access cover.

Remarks: Near the SW Cor of Sec 34 T87N R6W.



Prepared by DCI and GBC for Linn Co. and the City of Cedar Rapids, Iowa (Revised 08-05-05).