

Linn County and the City of Cedar Rapids, Iowa
Iowa North Zone (1401)
Horiz. Datum: NAD83(1996)
Vert. Datum: NAVD 1988
US Survey Feet
2005

Point Name: **JoCo 92-01**

Designation: JOHNSON CO. GPS CONTROL PT. 92-01, set by ASI for Johnson Co. in 1992

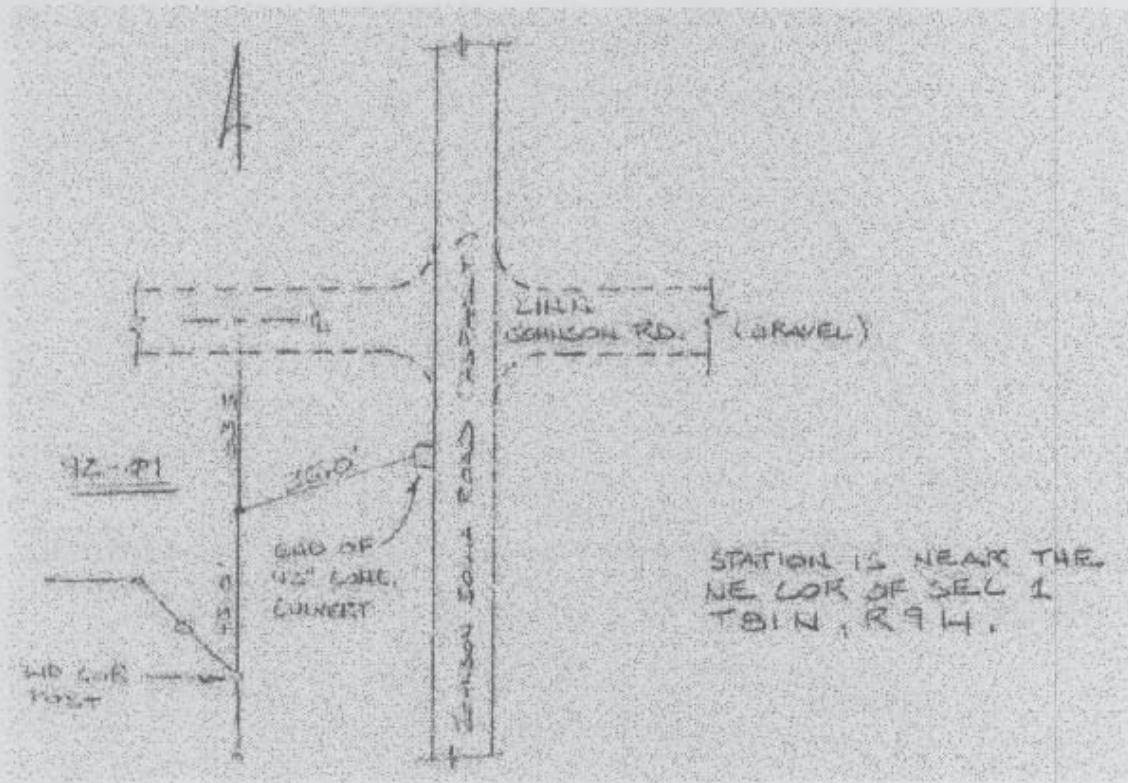
Northing: **3417121.62sft** Easting: **5375731.09sft**

Orthometric Height: **780.83sft** Ellipsoid Height: **675.39sft** **Geoid03**

Latitude: **41°51'42.02342"N** Longitude: **91°49'53.67743"W**

Mapping Angle: **1°07'51"** Combination Scale Factor: **1.00001129**

Monument Type: Berntsen Top Security Rod Monument with a 2-1/2" dia. domed survey cap and permanent magnet encased in a 6" dia. PVC pipe with an aluminum access cover.



Prepared by DCI and GBC for Linn Co. and the City of Cedar Rapids, Iowa (Revised 08-05-05).