

Linn County and the City of Cedar Rapids, Iowa
Iowa North Zone (1401)
Horiz. Datum: NAD83(1996)
Vert. Datum: NAVD 1988
US Survey Feet
2005

Point Name: **JoCo 92-02**

Designation: JOHNSON CO. GPS CONTROL PT. 92-02 set by ASI for Johnson Co. in 1992

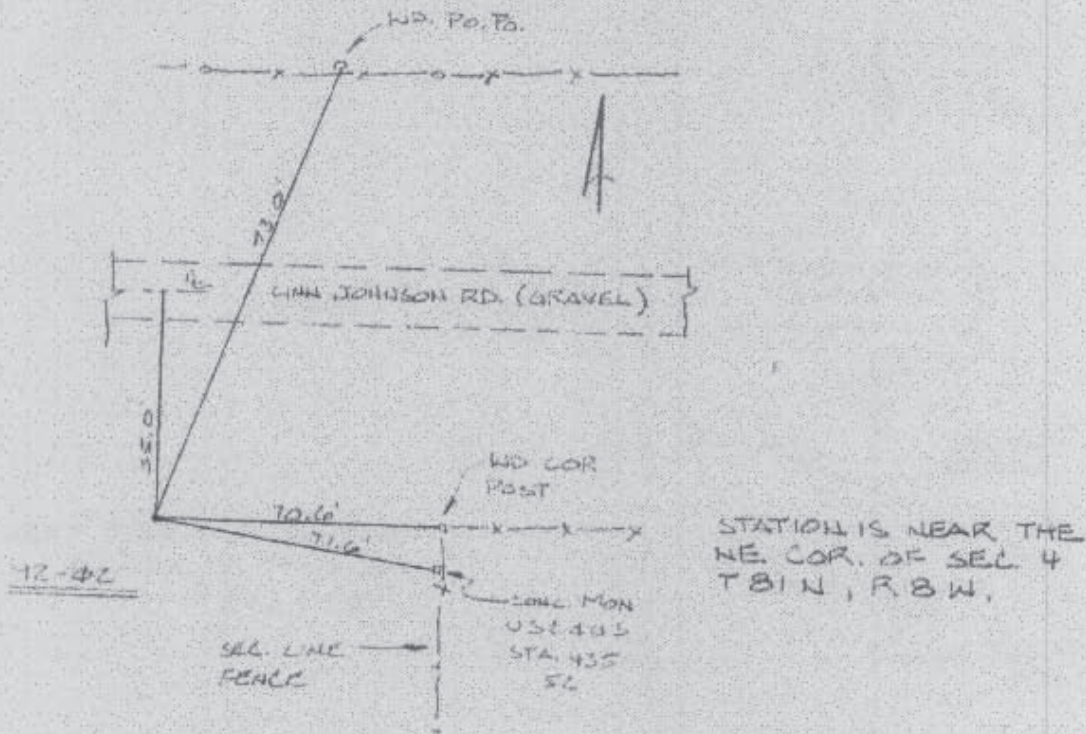
Northing: **3417498.75sft** Easting: **5391574.30sft**

Orthometric Height: **806.43sft** Ellipsoid Height: **700.72sft** **Geoid03**

Latitude: **41°51'42.60576"N** Longitude: **91°46'24.25250"W**

Mapping Angle: **1°10'13"** Combination Scale Factor: **1.00001005**

Monument Type: Berntsen Top Security Rod Monument with a 2-1/2" dia. domed survey cap and permanent magnet encased in a 6" dia. PVC pipe with an aluminum access cover.



Prepared by DCI and GBC for Linn Co. and the City of Cedar Rapids, Iowa (Revised 08-05-05).