

Linn County and the City of Cedar Rapids, Iowa
Iowa North Zone (1401)
Horiz. Datum: NAD83(1996)
Vert. Datum: NAVD 1988
US Survey Feet
2005

Point Name: JoCo 92-03

Designation: JOHNSON CO. GPS CONTROL PT. 92-03, set by ASI for Johnson Co. in 1992

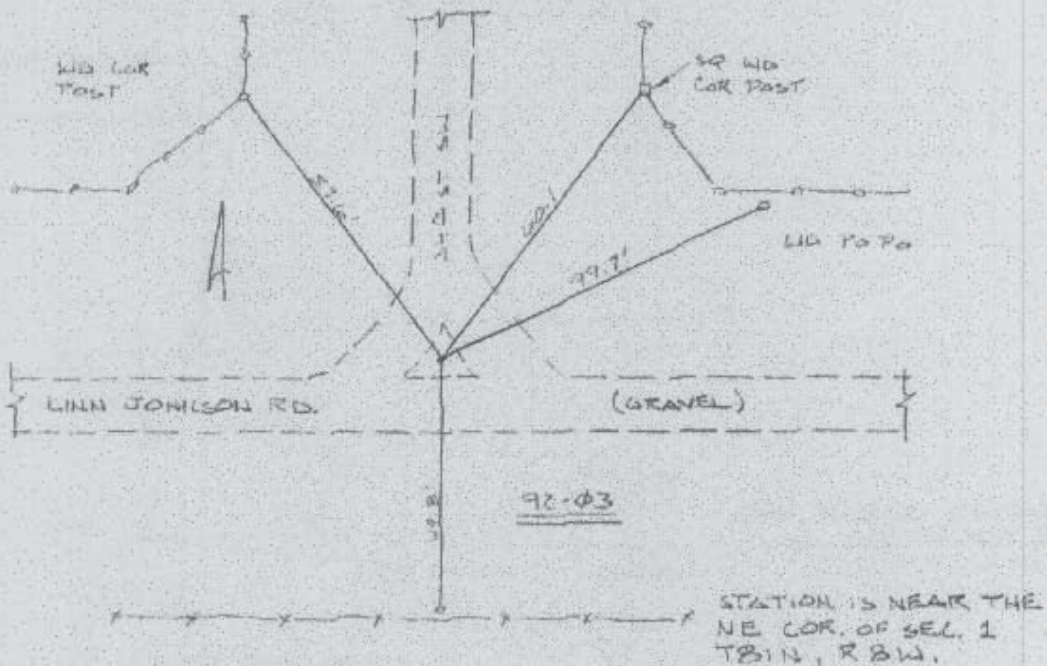
Northing: 3417923.38sft Easting: 5407607.03sft

Orthometric Height: 795.26sft Ellipsoid Height: 689.17sft Geoid03

Latitude: 41°51'43.50998"N Longitude: 91°42'52.30939"W

Mapping Angle: 1°12'36" Combination Scale Factor: 1.00001054

Monument Type: Berntsen Top Security Rod Monument with a 2-1/2" dia. domed survey cap and permanent magnet encased in a 6" dia. PVC pipe with an aluminum access cover.



Prepared by DCI and GBC for Linn Co. and the City of Cedar Rapids, Iowa (Revised 08-05-05).