

**Linn County and the City of Cedar Rapids, Iowa**  
 Iowa North Zone (1401)  
 Horiz. Datum: NAD83(1996)  
 Vert. Datum: NAVD 1988  
 US Survey Feet  
 2005

Point Name: **JoCo 92-04**

**Designation:** JOHNSON CO. GPS CONTROL PT. 92-04, set by ASI for Johnson Co. in 1992

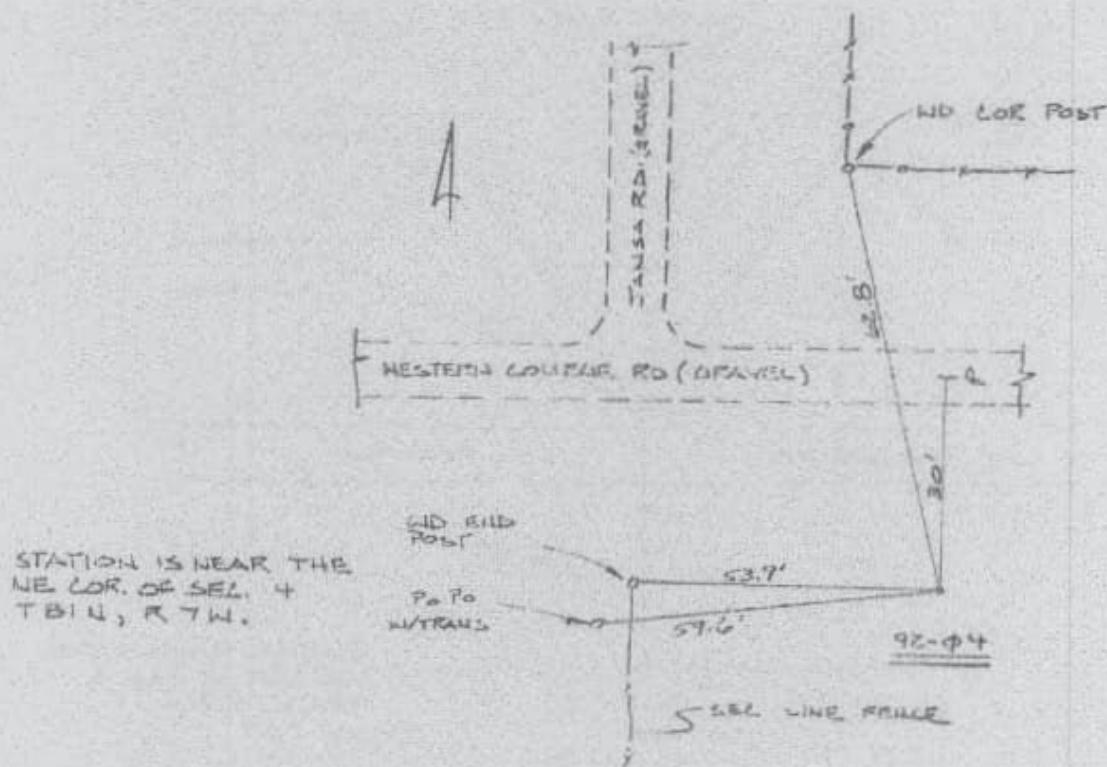
Northing: **3419251.41sft** Easting: **5423548.42sft**

Orthometric Height: **846.15sft** Ellipsoid Height: **739.94sft** **Geoid03**

Latitude: **41°51'53.24586"N** Longitude: **91°39'21.31108"W**

Mapping Angle: **1°14'59"** Combination Scale Factor: **1.00000746**

**Monument Type:** Bermtsen Top Security Rod Monument with a 2-1/2" dia. domed survey cap and permanent magnet encased in a 6"dia. PVC pipe with an aluminum access cover.



*Prepared by DCI and GBC for Linn Co. and the City of Cedar Rapids, Iowa (Revised 08-05-05).*