

Linn County and the City of Cedar Rapids, Iowa  
Iowa North Zone (1401)  
Horiz. Datum: NAD83(1996)  
Vert. Datum: NAVD 1988  
US Survey Feet  
2005

Point Name: **JoCo 92-07**

**Designation:** JOHNSON CO. GPS CONTROL PT. 92-07, set by ASI for Johnson Co. in 1992

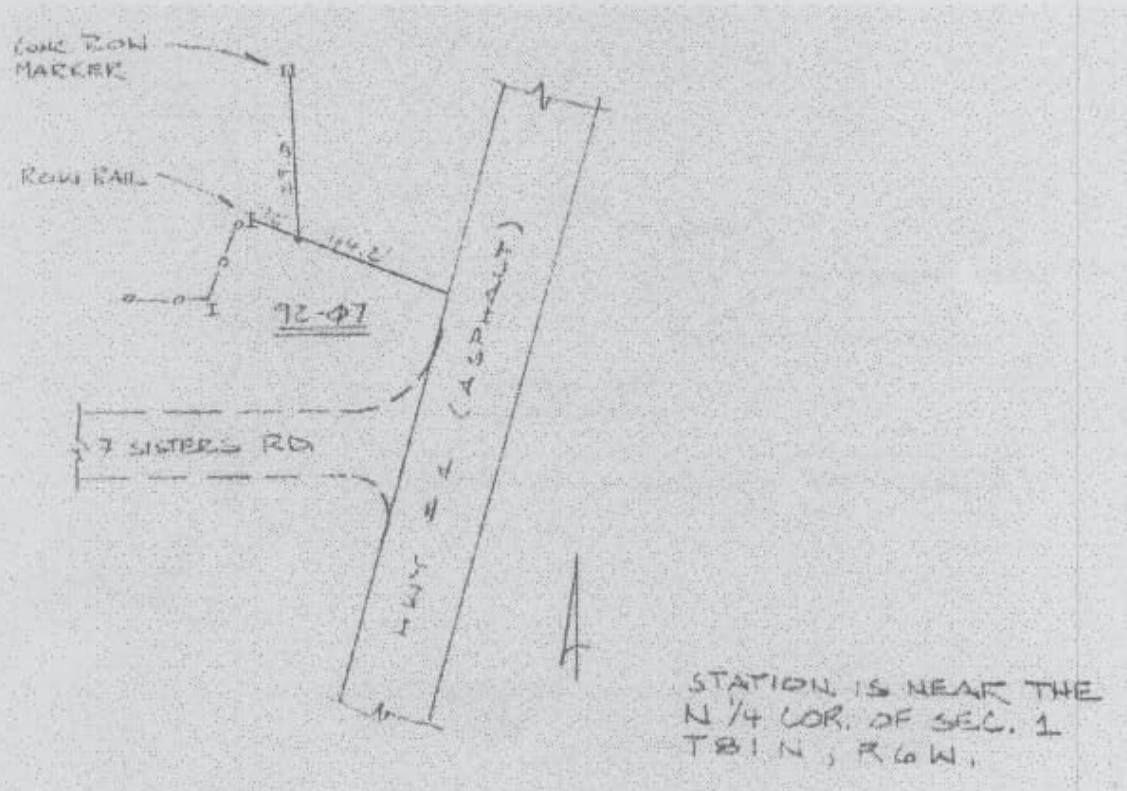
Northing: **3418498.88sft** Easting: **5467828.29sft**

Orthometric Height: **865.74sft** Ellipsoid Height: **759.27sft** **Geoid03**

Latitude: **41°51'35.85256"N** Longitude: **91°29'36.52762"W**

Mapping Angle: **1°21'36"** Combination Scale Factor: **1.00000771**

**Monument Type:** Bernsen Top Security Rod Monument with a 2-1/2" dia. domed survey cap and permanent magnet encased in a 6" dia. PVC pipe with an aluminum access cover.



Prepared by DCI and GBC for Linn Co. and the City of Cedar Rapids, Iowa (Revised 08-05-05).