

Linn County and the City of Cedar Rapids, Iowa
Iowa North Zone (1401)
Horiz. Datum: NAD83(1996)
Vert. Datum: NAVD 1988
US Survey Feet
2005

Point Name: JoCo 92-08

Designation: JOHNSON CO. GPS CONTROL PT. 92-08, set by ASI for Johnson Co. in 1992

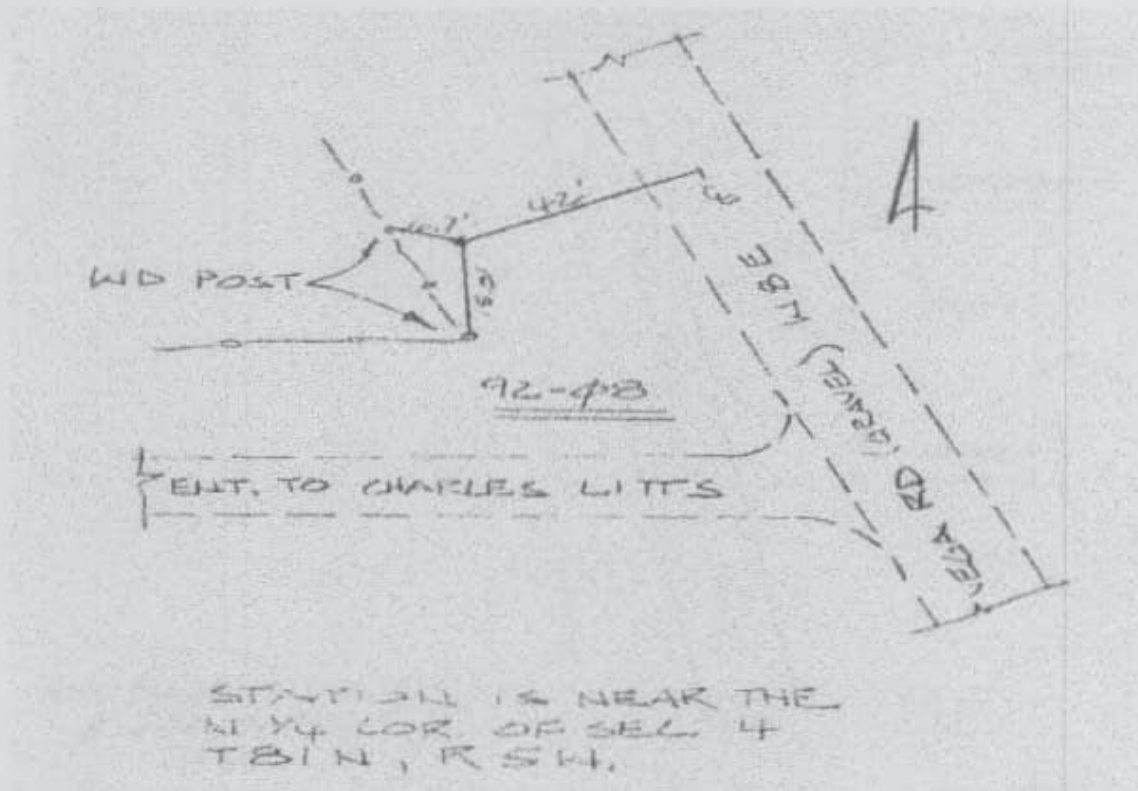
Northing: 3418905.55sft Easting: 5484496.07sft

Orthometric Height: 721.71sft Ellipsoid Height: 615.14sft Geoid03

Latitude: 41°51'35.90146"N Longitude: 91°25'56.20459"W

Mapping Angle: 1°24'05" Combination Scale Factor: 1.00001458

Monument Type: Berntsen Top Security Rod Monument with a 2-1/2" dia. domed survey cap and permanent magnet encased in a 6" dia. PVC pipe with an aluminum access cover.



Prepared by DCI and GBC for Linn Co. and the City of Cedar Rapids, Iowa (Revised 08-05-05).