

Linn County and the City of Cedar Rapids, Iowa
Iowa North Zone (1401)
Horiz. Datum: NAD83(1996)
Vert. Datum: NAVD 1988
US Survey Feet
2005

Point Name: JoCo 92-09

Designation: JOHNSON CO. GPS CONTROL PT. 92-09, set by ASI for Johnson Co. in 1992

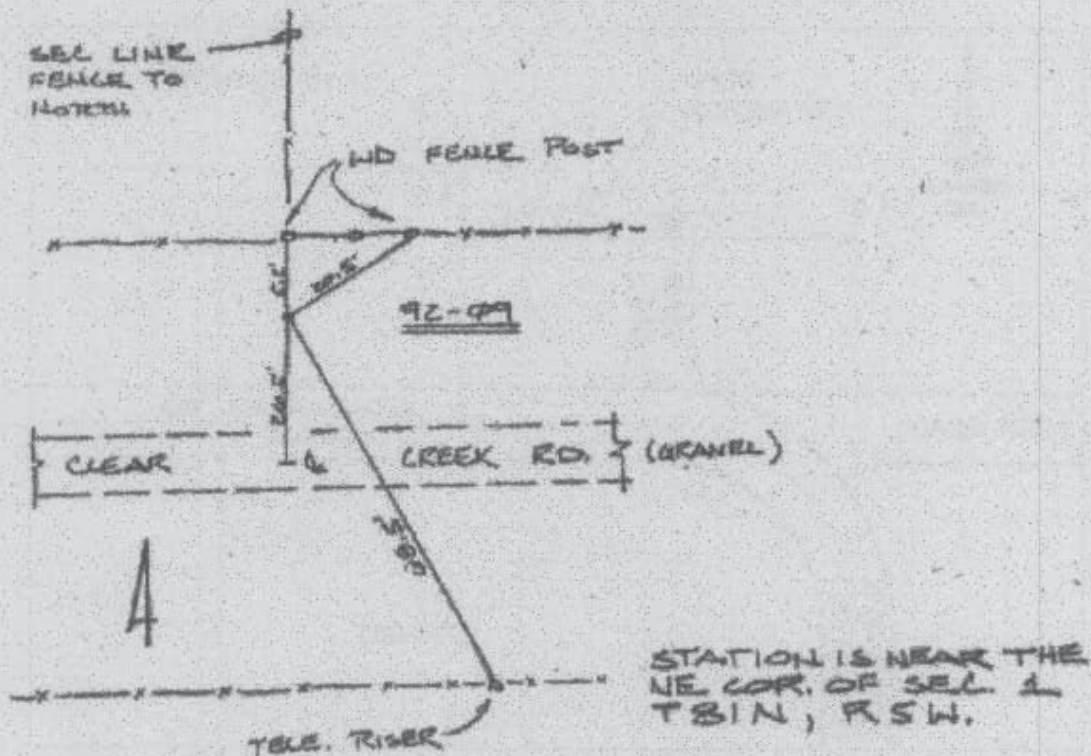
Northing: 3419415.32sft Easting: 5502485.27sft

Orthometric Height: 736.35sft Ellipsoid Height: 629.73sft Geoid03

Latitude: 41°51'36.52022"N Longitude: 91°21'58.39078"W

Mapping Angle: 1°26'46" Combination Scale Factor: 1.00001384

Monument Type: Berntsen Top Security Rod Monument with a 2-1/2" dia. domed survey cap and permanent magnet encased in a 6" dia. PVC pipe with an aluminum access cover.



Prepared by DCI and GBC for Linn Co. and the City of Cedar Rapids, Iowa (Revised 08-05-05).