

Linn County and the City of Cedar Rapids, Iowa
 Iowa North Zone (1401)
 Horiz. Datum: NAD83(1996)
 Vert. Datum: NAVD 1988
 US Survey Feet
2005

Point Name: **Jones 1**

Designation: JONES CO. GPS CONTROL PT. 2004-001, set by DCI for Jones Co. in 2004

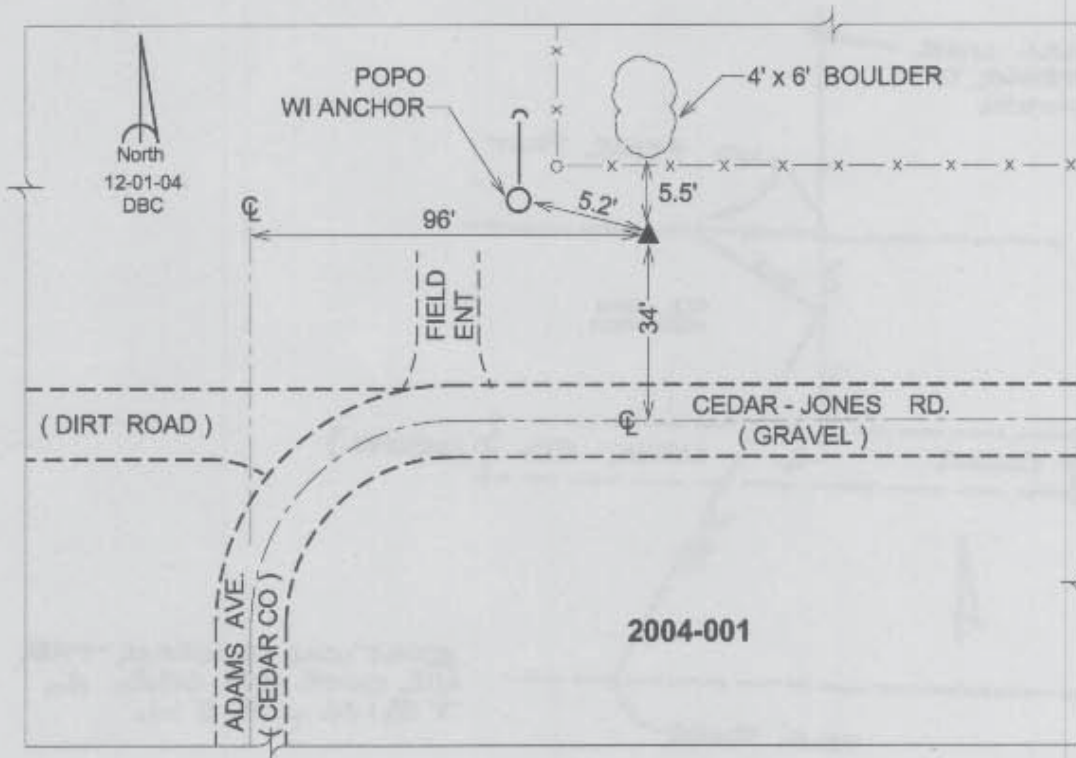
Northing: **3451273.16sft** Easting: **5504383.25sft**

Orthometric Height: **897.25sft** Ellipsoid Height: **790.85sft** **Geoid03**

Latitude: **41°56'50.66043"N** Longitude: **91°21'22.64364"W**

Mapping Angle: **1°27'10"** Combination Scale Factor: **0.99998605**

Monument Type: Berntsen Top Security Rod Monument with a 2-1/2" dia. domed survey cap and permanent magnet encased in a 5"dia. PVC pipe with a NGS style aluminum access cover.



Prepared by DCI and GBC for Linn Co. and the City of Cedar Rapids, Iowa (Revised 08-05-05).