

**Linn County and the City of Cedar Rapids, Iowa**  
 Iowa North Zone (1401)  
 Horiz. Datum: NAD83(1996)  
 Vert. Datum: NAVD 1988  
 US Survey Feet  
**2005**

Point Name: **Jones 2**

**Designation:** JONES CO. GPS CONTROL PT. 2004-002, set by DCI for Jones Co. in 2004

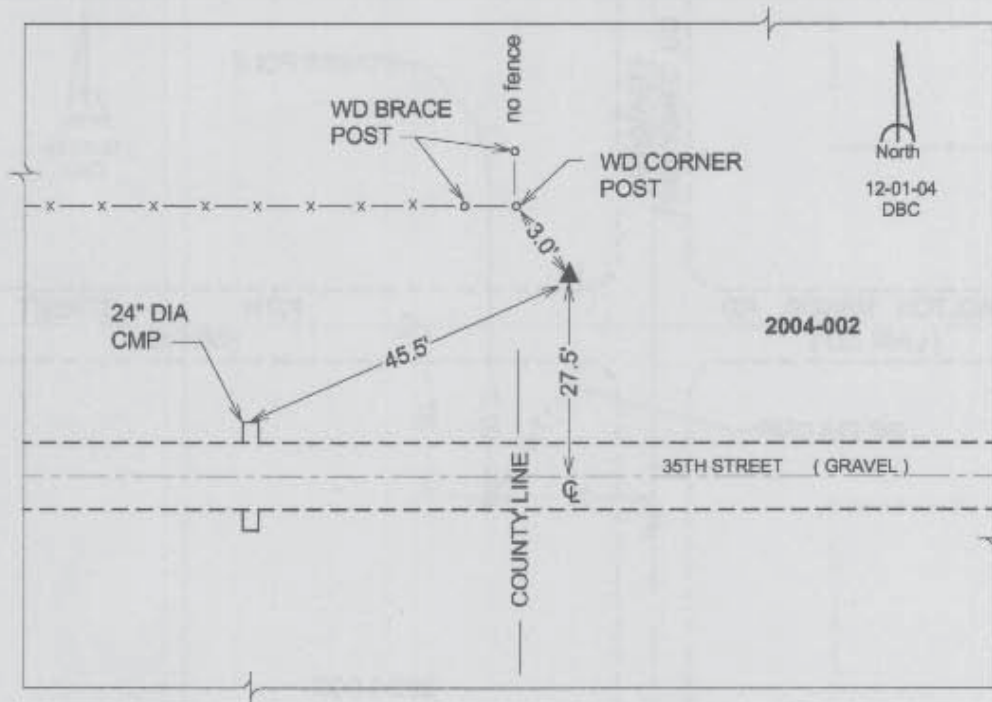
Northing: **3464487.23sft** Easting: **5501548.01sft**

Orthometric Height: **882.74sft** Ellipsoid Height: **776.41sft** **Geoid03**

Latitude: **41°59'01.86599"N** Longitude: **91°21'55.73549"W**

Mapping Angle: **1°26'48"** Combination Scale Factor: **0.99997902**

**Monument Type:** Berntsen Top Security Rod Monument with a 2-1/2" dia. domed survey cap and permanent magnet encased in a 5"dia. PVC pipe with a NGS style aluminum access cover.



*Prepared by DCI and GBC for Linn Co. and the City of Cedar Rapids, Iowa (Revised 08-05-05).*