

Linn County and the City of Cedar Rapids, Iowa
Iowa North Zone (1401)
Horiz. Datum: NAD83(1996)
Vert. Datum: NAVD 1988
US Survey Feet
2005

Point Name: **Jones 3**

Designation: JONES CO. GPS CONTROL PT. 2004-003, set by DCI for Jones Co. in 2004

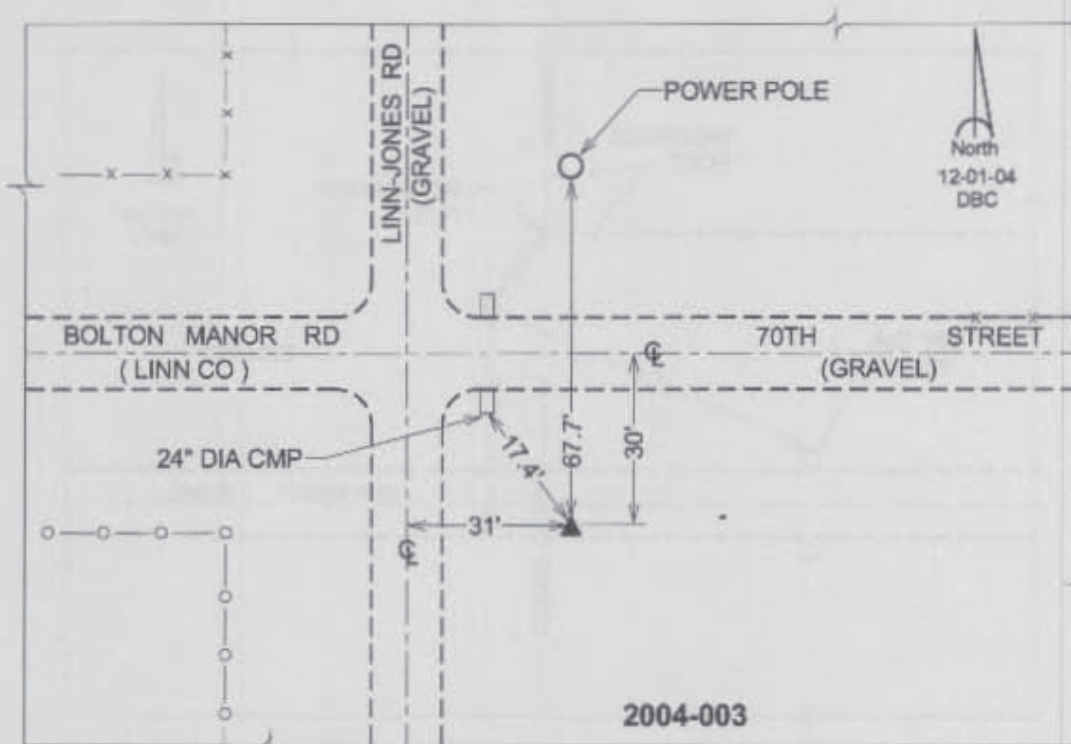
Northing: **3482917.66sft** Easting: **5501276.17sft**

Orthometric Height: **905.93sft** Ellipsoid Height: **799.73sft** **Geoid03**

Latitude: **42°02'03.94589"N** Longitude: **91°21'53.17078"W**

Mapping Angle: **1°26'50"** Combination Scale Factor: **0.99996785**

Monument Type: Bemtsen Top Security Rod Monument with a 2-1/2" dia. domed survey cap and permanent magnet encased in a 5"dia. PVC pipe with a NGS style aluminum access cover.



Prepared by DCI and GBC for Linn Co. and the City of Cedar Rapids, Iowa (Revised 08-05-05).