

**Linn County and the City of Cedar Rapids, Iowa**  
Iowa North Zone (1401)  
Horiz. Datum: NAD83(1996)  
Vert. Datum: NAVD 1988  
US Survey Feet  
**2005**

Point Name: **Jones 6**

**Designation:** JONES CO. GPS CONTROL PT. 2004-006, set by DCI for Jones Co. in 2004

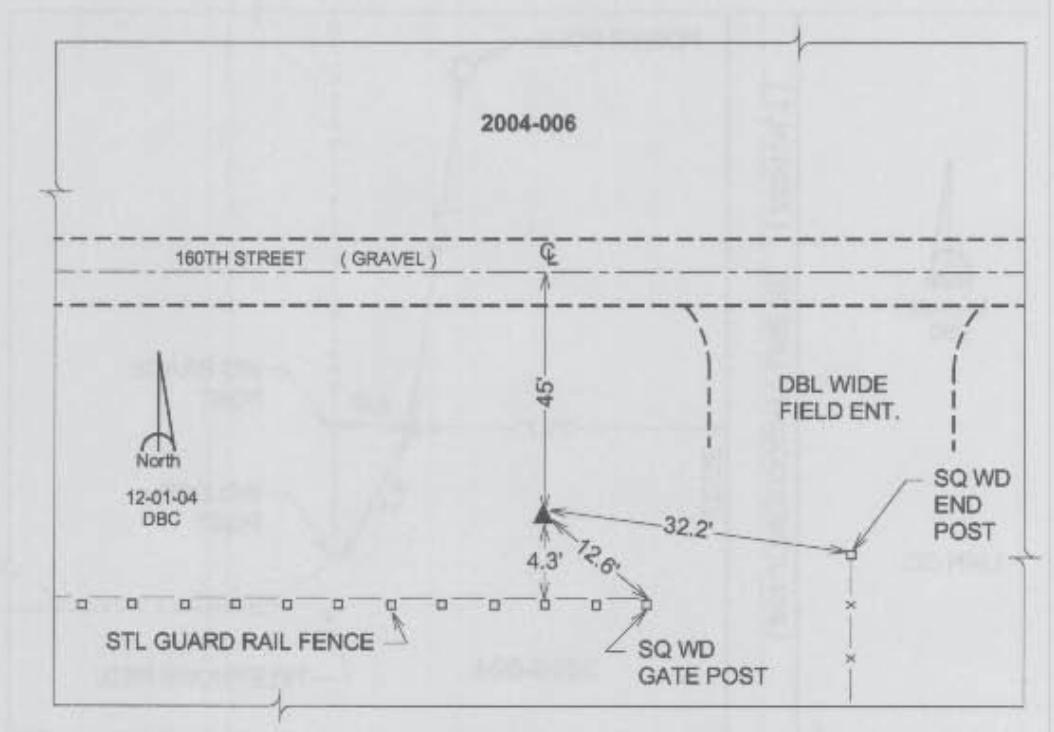
Northing: **3530670.97sft** Easting: **5501290.74sft**

Orthometric Height: **833.34sft** Ellipsoid Height: **727.87sft** **Geoid03**

Latitude: **42°09'55.53621"N** Longitude: **91°21'36.96327"W**

Mapping Angle: **1°27'01"** Combination Scale Factor: **0.99994881**

**Monument Type:** Berntsen Top Security Rod Monument with a 2-1/2" dia. domed survey cap and permanent magnet encased in a 5" dia. PVC pipe with a NGS style aluminum access cover.



*Prepared by DCI and GBC for Linn Co. and the City of Cedar Rapids, Iowa (Revised 08-05-05).*