

Linn County and the City of Cedar Rapids, Iowa
Iowa North Zone (1401)
Horiz. Datum: NAD83(1996)
Vert. Datum: NAVD 1988
US Survey Feet
2005

Point Name: **Jones 8**

Designation: JONES CO. GPS CONTROL PT. 2004-008, set by DCI for Jones Co. in 2004

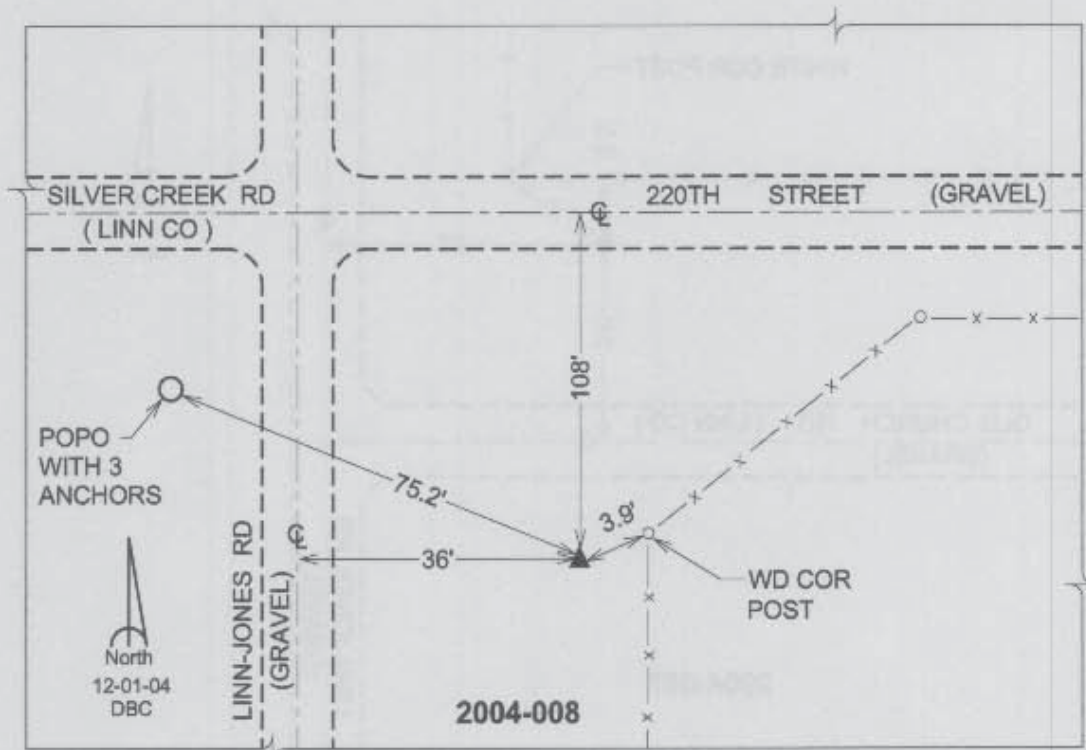
Northing: **3562403.22sft** Easting: **5499599.03sft**

Orthometric Height: **950.51sft** Ellipsoid Height: **846.04sft** **Geoid03**

Latitude: **42°15'09.33406"N** Longitude: **91°21'48.77237"W**

Mapping Angle: **1°26'53"** Combination Scale Factor: **0.99993108**

Monument Type: Berntsen Top Security Rod Monument with a 2-1/2" dia. domed survey cap and permanent magnet encased in a 5"dia. PVC pipe with a NGS style aluminum access cover.



Prepared by DCI and GBC for Linn Co. and the City of Cedar Rapids, Iowa (Revised 08-05-05).