

**Linn County and the City of Cedar Rapids, Iowa**  
 Iowa North Zone (1401)  
 Horiz. Datum: NAD83(1996)  
 Vert. Datum: NAVD 1988  
 US Survey Feet  
 2005

Point Name: **Linn 10**

**Designation:** Station 10, Set by the Surdex Corp. for Linn County in 2000

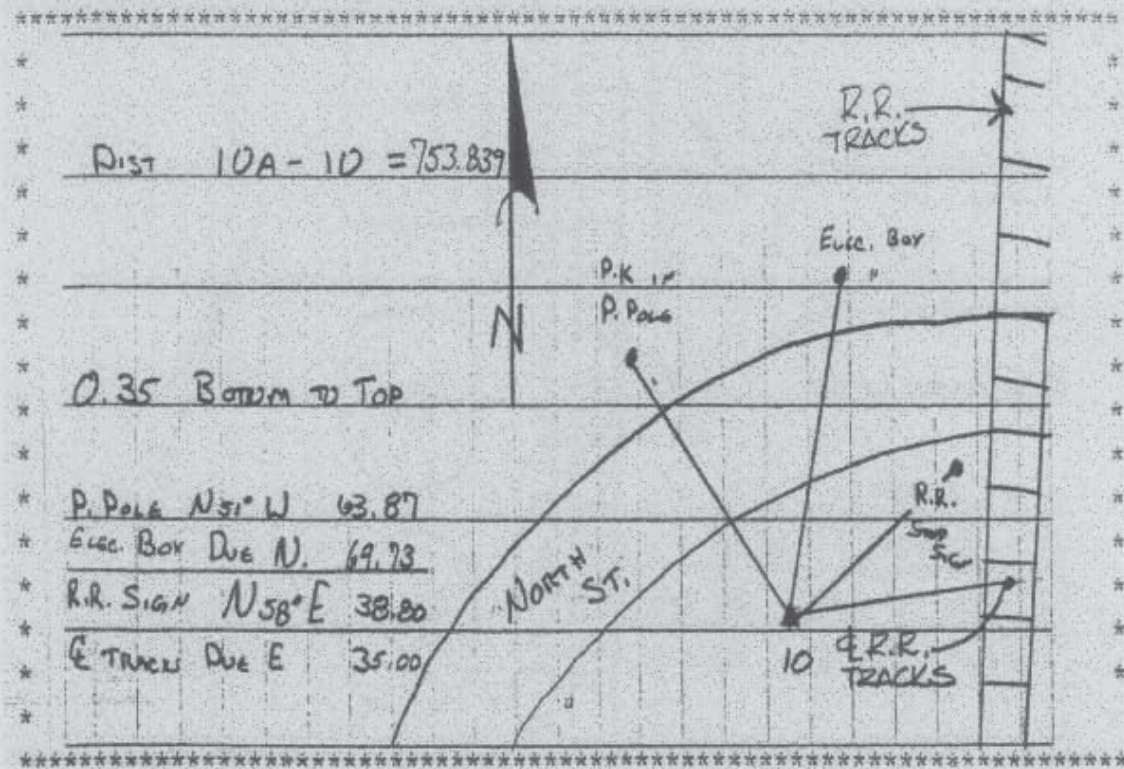
Northing: **3524486.44sft** Easting: **5432156.81sft**

Orthometric Height: **887.83sft** Ellipsoid Height: **783.52sft** **Geoid03**

Latitude: **42°09'10.71060"N** Longitude: **91°36'56.57896"W**

Mapping Angle: **1°16'37"** Combination Scale Factor: **0.99994807**

**Monument Type:** Aluminum Cap on 6-foot Rebar set in a 6" dia. PVC pipe with an aluminum access cover.



Prepared by DCI and GBC for Linn Co. and the City of Cedar Rapids, Iowa (Revised 08-05-05).