

Linn County and the City of Cedar Rapids, Iowa
 Iowa North Zone (1401)
 Horiz. Datum: NAD83(1996)
 Vert. Datum: NAVD 1988
 US Survey Feet
 2005

Point Name: **Linn 11**

Designation: Station 11, Set by the Surdex Corp. for Linn County in 2000

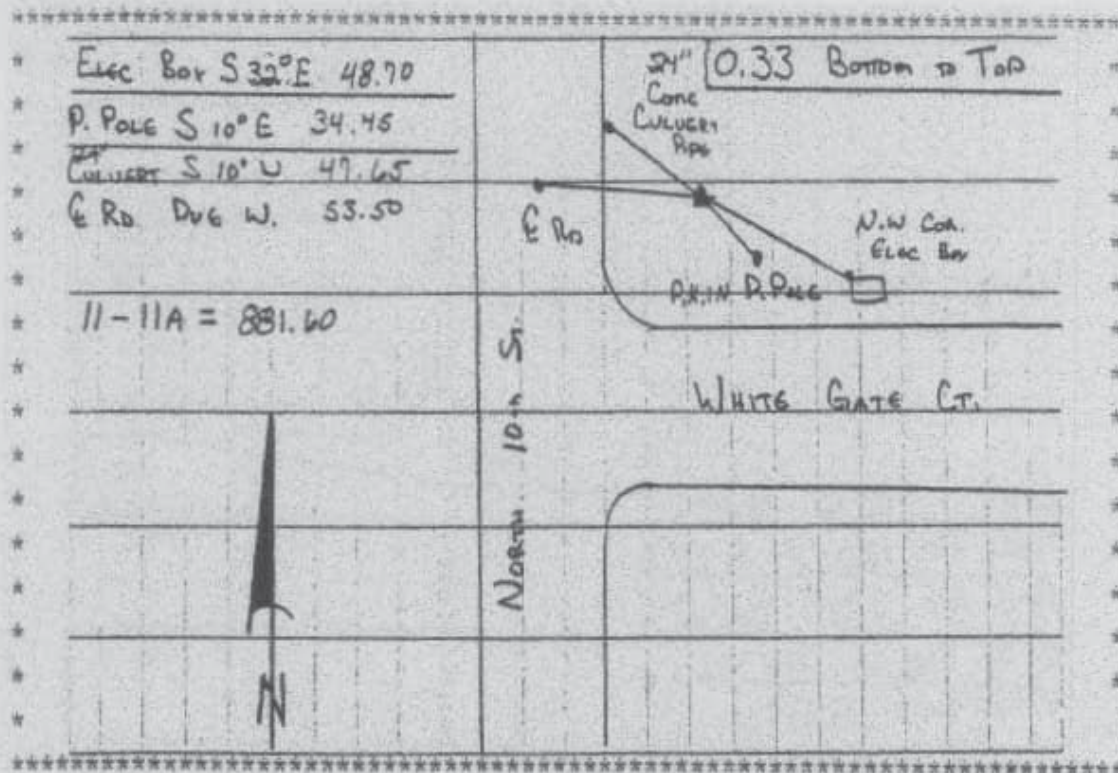
Northing: 3498404.87sft Easting: 5437218.28sft

Orthometric Height: 843.36sft Ellipsoid Height: 738.25sft Geoid03

Latitude: 42°04'52.00163"N Longitude: 91°35'57.18394"W

Mapping Angle: 1°17'18" Combination Scale Factor: 0.99996218

Monument Type: Aluminum Cap on 6-foot Rebar set in a 6" dia. PVC pipe with an aluminum access cover.



Prepared by DCI and GBC for Linn Co. and the City of Cedar Rapids, Iowa (Revised 08-05-05).