

Linn County and the City of Cedar Rapids, Iowa
 Iowa North Zone (1401)
 Horiz. Datum: NAD83(1996)
 Vert. Datum: NAVD 1988
 US Survey Feet
2005

Point Name: **Linn 11A**

Designation: Station 11A, Set by the Surdex Corp. for Linn County in 2000

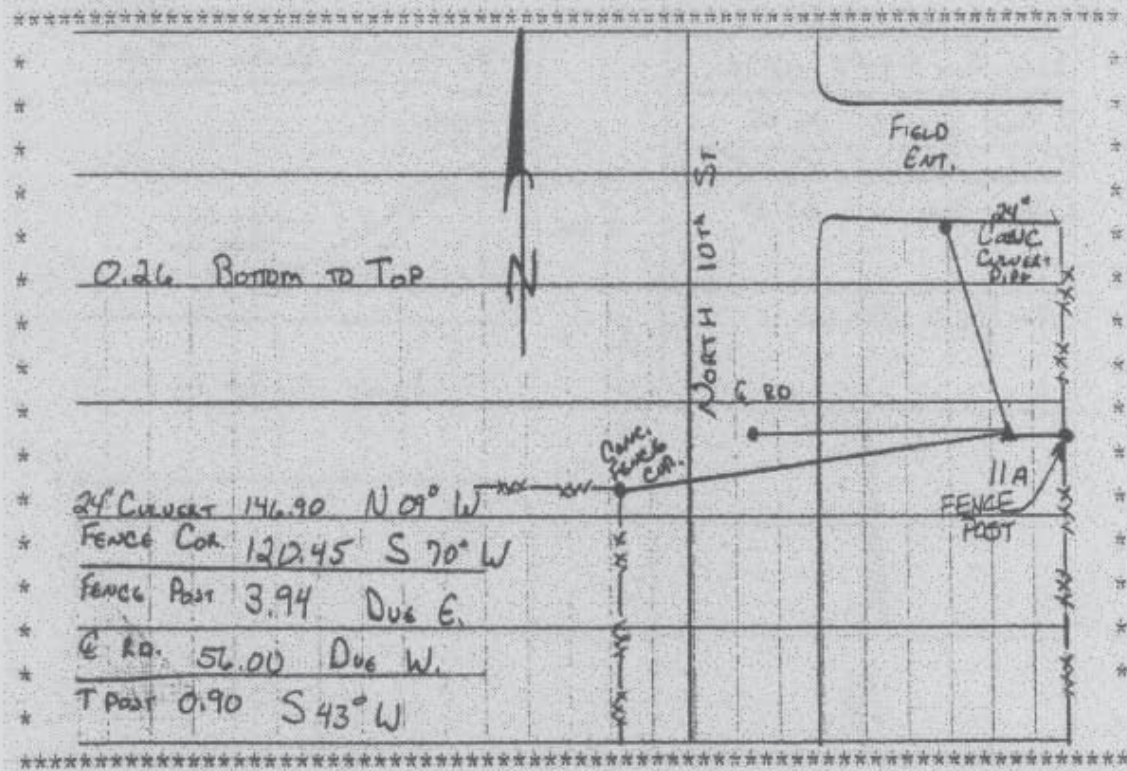
Northing: **3497523.58sft** Easting: **5437242.43sft**

Orthometric Height: **858.57sft** Ellipsoid Height: **753.44sft** **Geoid03**

Latitude: **42°04'43.29233"N** Longitude: **91°35'57.12659"W**

Mapping Angle: **1°17'18"** Combination Scale Factor: **0.99996189**

Monument Type: Aluminum Cap on 6-foot Rebar set in a 6" dia. PVC pipe with an aluminum access cover.



Prepared by DCI and GBC for Linn Co. and the City of Cedar Rapids, Iowa (Revised 08-05-05).