

Linn County and the City of Cedar Rapids, Iowa
 Iowa North Zone (1401)
 Horiz. Datum: NAD83(1996)
 Vert. Datum: NAVD 1988
 US Survey Feet
 2005

Point Name: **Linn 13A**

Designation: Station 13A, Set by the Surdex Corp. for Linn County in 2000

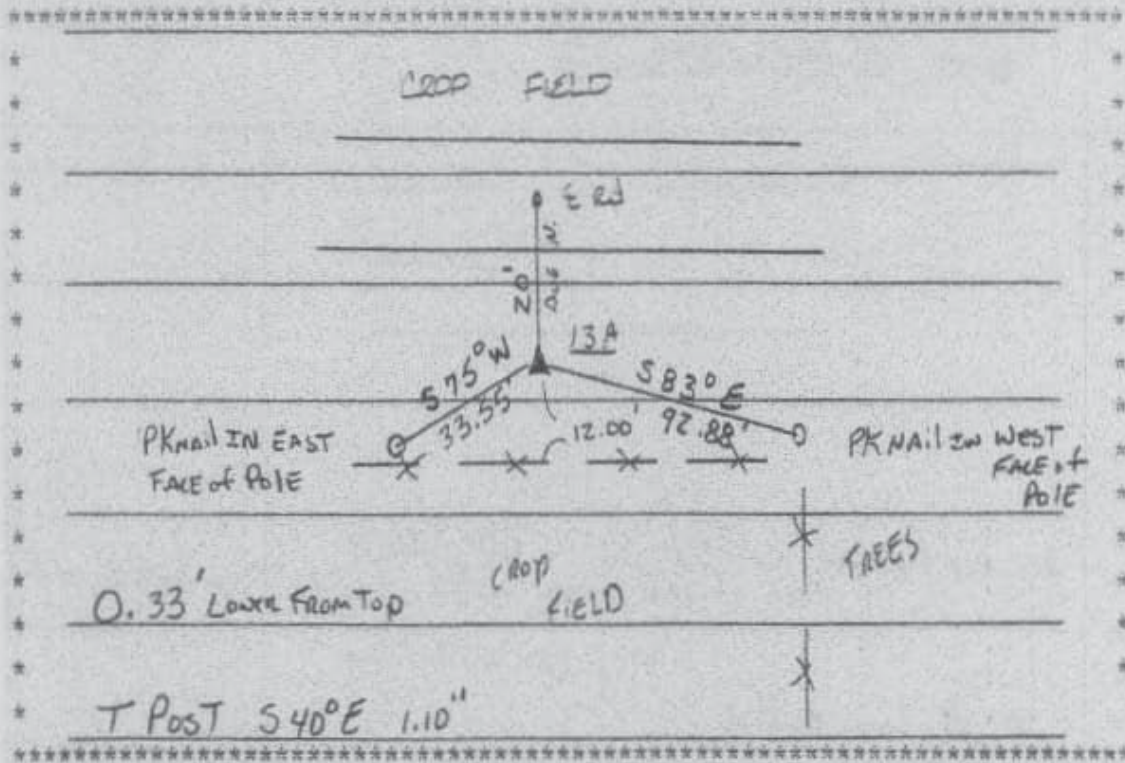
Northing: 3576435.50sft Easting: 5374815.46sft

Orthometric Height: 898.75sft Ellipsoid Height: 797.17sft Geoid03

Latitude: 42°17'55.71866"N Longitude: 91°49'24.02290"W

Mapping Angle: 1°08'11" Combination Scale Factor: 0.99992794

Monument Type: Aluminum Cap on 6-foot Rebar set in a 6" dia. PVC pipe with an aluminum access cover.



Prepared by DCI and GBC for Linn Co. and the City of Cedar Rapids, Iowa (Revised 08-05-05).