

Linn County and the City of Cedar Rapids, Iowa
 Iowa North Zone (1401)
 Horiz. Datum: NAD83(1996)
 Vert. Datum: NAVD 1988
 US Survey Feet
2005

Point Name: **Linn 14A**

Designation: Station 14A, Set by the Surdex Corp. for Linn County in 2000

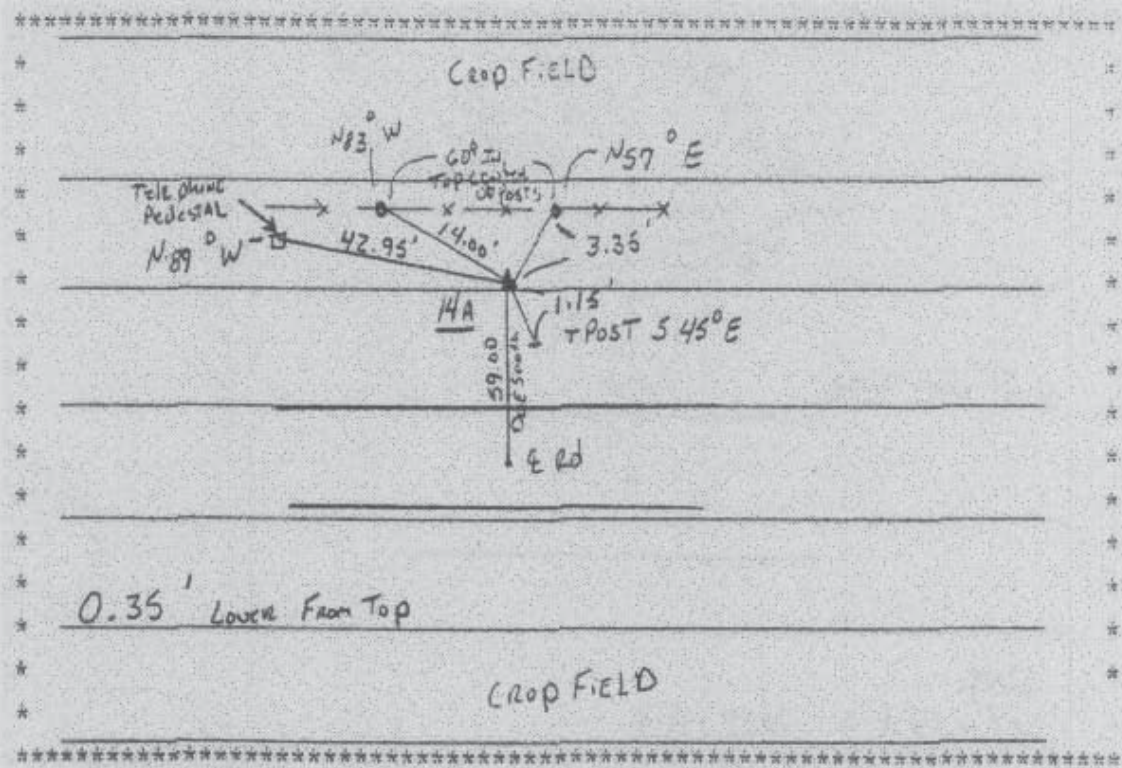
Northing: **3540080.02sft** Easting: **5393524.00sft**

Orthometric Height: **892.70sft** Ellipsoid Height: **789.85sft** **Geoid03**

Latitude: **42°11'52.90765"N** Longitude: **91°45'25.09581"W**

Mapping Angle: **1°10'53"** Combination Scale Factor: **0.99994106**

Monument Type: Aluminum Cap on 6-foot Rebar set in a 6" dia. PVC pipe with an aluminum access cover.



Prepared by DCI and GBC for Linn Co. and the City of Cedar Rapids, Iowa (Revised 08-05-05).