

Linn County and the City of Cedar Rapids, Iowa
 Iowa North Zone (1401)
 Horiz. Datum: NAD83(1996)
 Vert. Datum: NAVD 1988
 US Survey Feet
2005

Point Name: **Linn 15A**

Designation: Station 15A, Set by the Surdex Corp. for Linn County in 2000

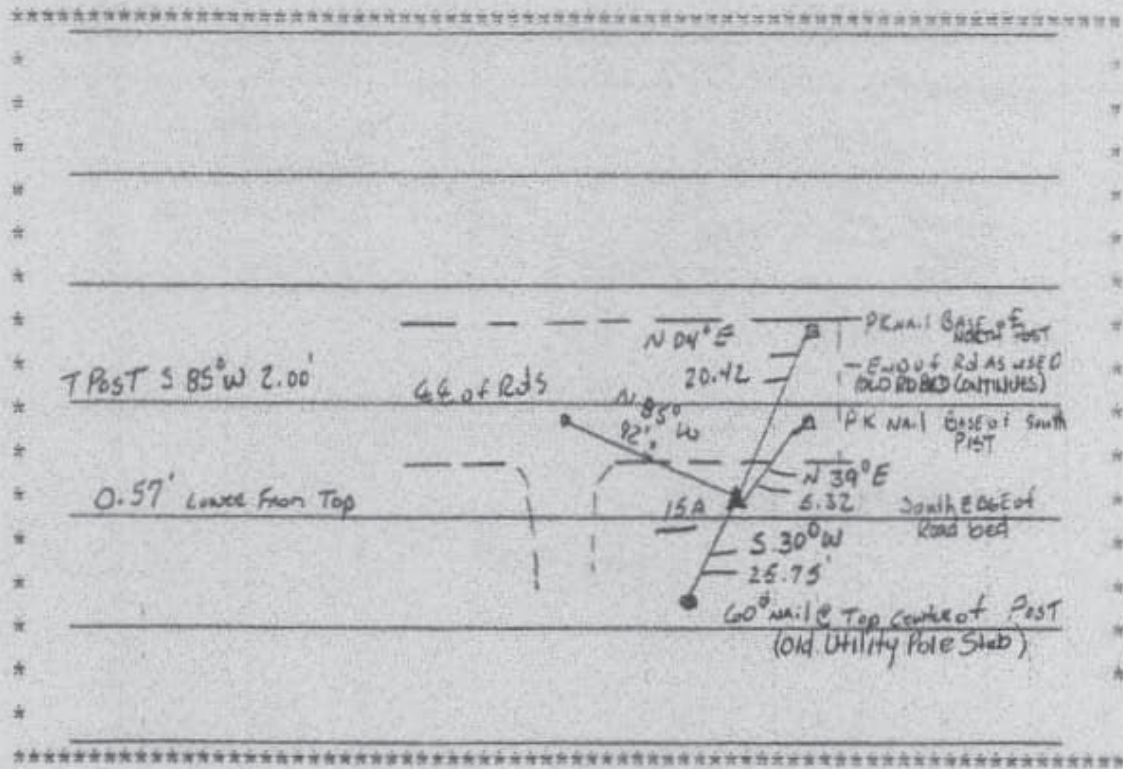
Northing: **3512930.27sft** Easting: **5374477.05sft**

Orthometric Height: **856.09sft** Ellipsoid Height: **752.90sft** **Geoid03**

Latitude: **42°07'28.55478"N** Longitude: **91°49'45.22547"W**

Mapping Angle: **1°07'56"** Combination Scale Factor: **0.99995406**

Monument Type: Aluminum Cap on 6-foot Rebar set in a 6" dia. PVC pipe with an aluminum access cover.



Prepared by DCI and GBC for Linn Co. and the City of Cedar Rapids, Iowa (Revised 08-05-05).