

Linn County and the City of Cedar Rapids, Iowa
 Iowa North Zone (1401)
 Horiz. Datum: NAD83(1996)
 Vert. Datum: NAVD 1988
 US Survey Feet
2005

Point Name: **Linn 16**

Designation: Station 16, Set by the Surdex Corp. for Linn County in 2000

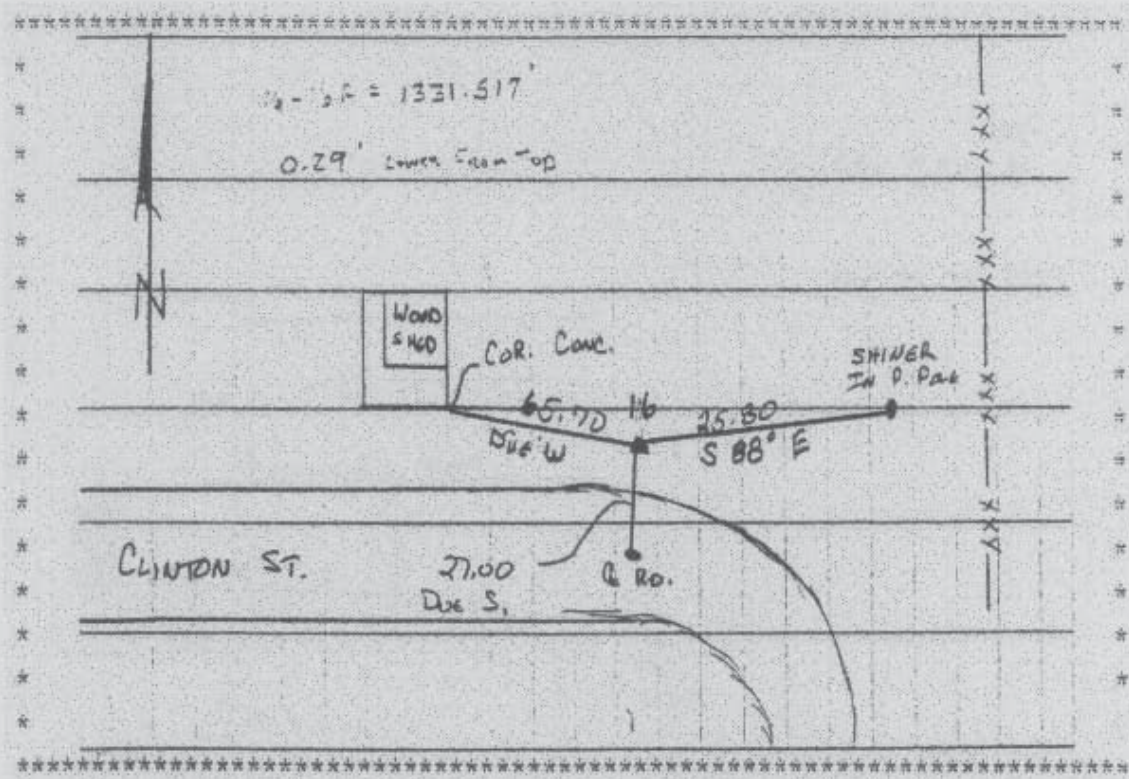
Northing: **3492191.21sft** Easting: **5384273.04sft**

Orthometric Height: **742.15sft** Ellipsoid Height: **638.12sft** **Geoid03**

Latitude: **42°04'01.78660"N** Longitude: **91°47'40.80904"W**

Mapping Angle: **1°09'21"** Combination Scale Factor: **0.99996946**

Monument Type: Aluminum Cap on 6-foot Rebar set in a 6" dia. PVC pipe with an aluminum access cover.



Prepared by DCI and GBC for Linn Co. and the City of Cedar Rapids, Iowa (Revised 08-05-05).