

Linn County and the City of Cedar Rapids, Iowa
 Iowa North Zone (1401)
 Horiz. Datum: NAD83(1996)
 Vert. Datum: NAVD 1988
 US Survey Feet
2005

Point Name: **Linn 16A**

Designation: Station 16A, Set by the Surdex Corp. for Linn County in 2000

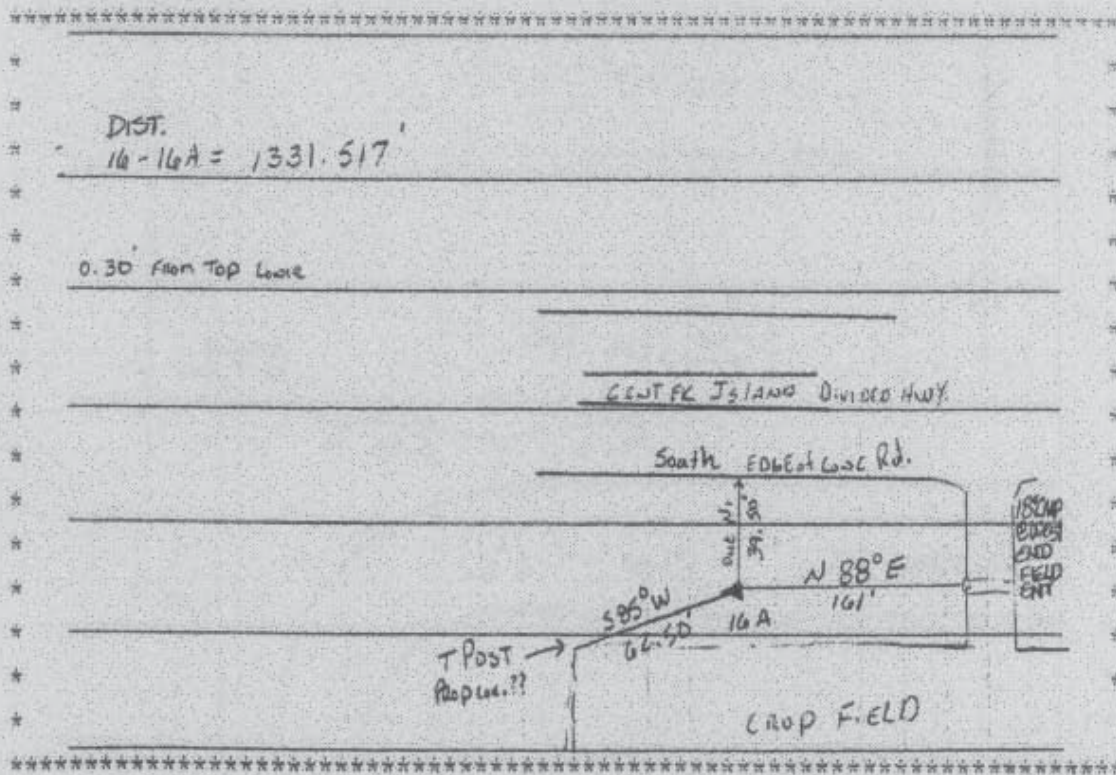
Northing: **3493520.67**sft Easting: **5384347.17**sft

Orthometric Height: **739.40**sft Ellipsoid Height: **635.40**sft **Geoid03**

Latitude: **42°04'14.90263"N** Longitude: **91°47'39.47081"W**

Mapping Angle: **1°09'22"** Combination Scale Factor: **0.99996893**

Monument Type: Aluminum Cap on 6-foot Rebar set in a 6" dia. PVC pipe with an aluminum access cover.



Prepared by DCI and GBC for Linn Co. and the City of Cedar Rapids, Iowa (Revised 08-05-05).