

**Linn County and the City of Cedar Rapids, Iowa**  
 Iowa North Zone (1401)  
 Horiz. Datum: NAD83(1996)  
 Vert. Datum: NAVD 1988  
 US Survey Feet  
 2005

Point Name: **Linn 17**

**Designation:** Station 17, Set by the Surdex Corp. for Linn County in 2000

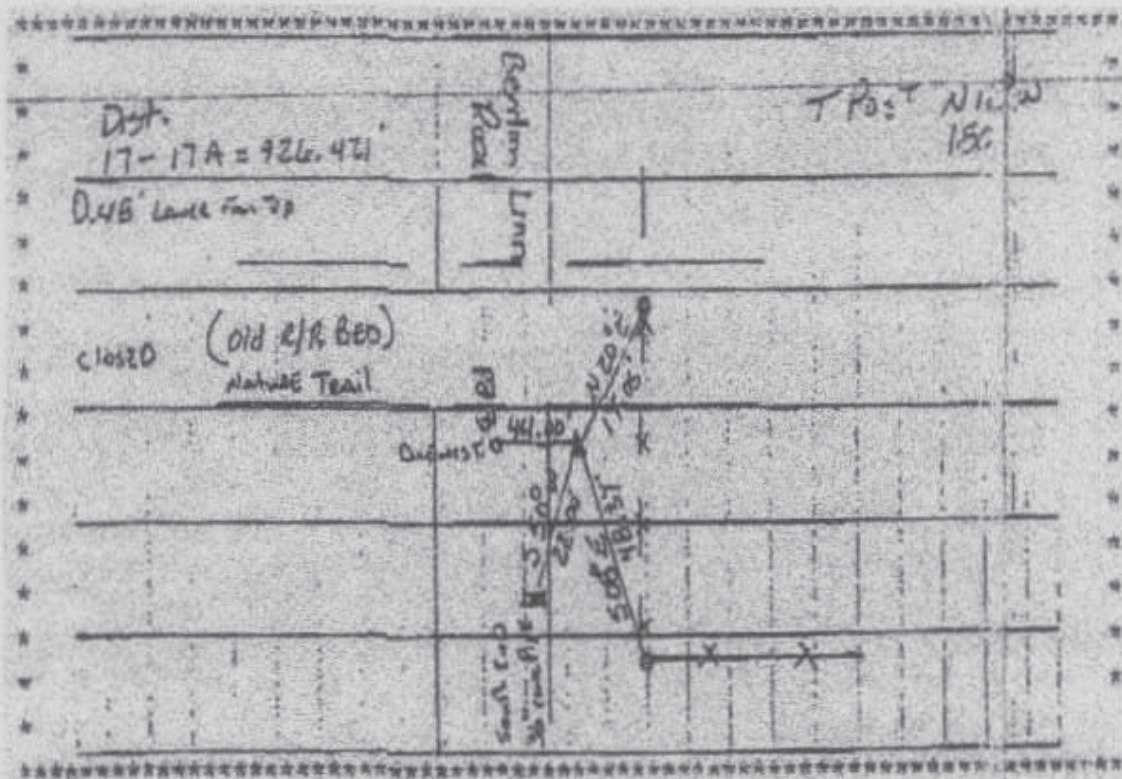
Northing: **3465871.04sft** Easting: **5374046.59sft**

Orthometric Height: **854.90sft** Ellipsoid Height: **750.55sft** Geoid03

Latitude: **41°59'43.84116"N** Longitude: **91°50'03.24067"W**

Mapping Angle: **1°07'44"** Combination Scale Factor: **0.99997786**

**Monument Type:** Aluminum Cap on 6-foot Rebar set in a 6" dia. PVC pipe with an aluminum access cover.



Prepared by DCI and GBC for Linn Co. and the City of Cedar Rapids, Iowa (Revised 08-05-05).