

Linn County and the City of Cedar Rapids, Iowa
 Iowa North Zone (1401)
 Horiz. Datum: NAD83(1996)
 Vert. Datum: NAVD 1988
 US Survey Feet
2005

Point Name: **Linn 18A**

Designation: Station 18A, Set by the Surdex Corp. for Linn County in 2000

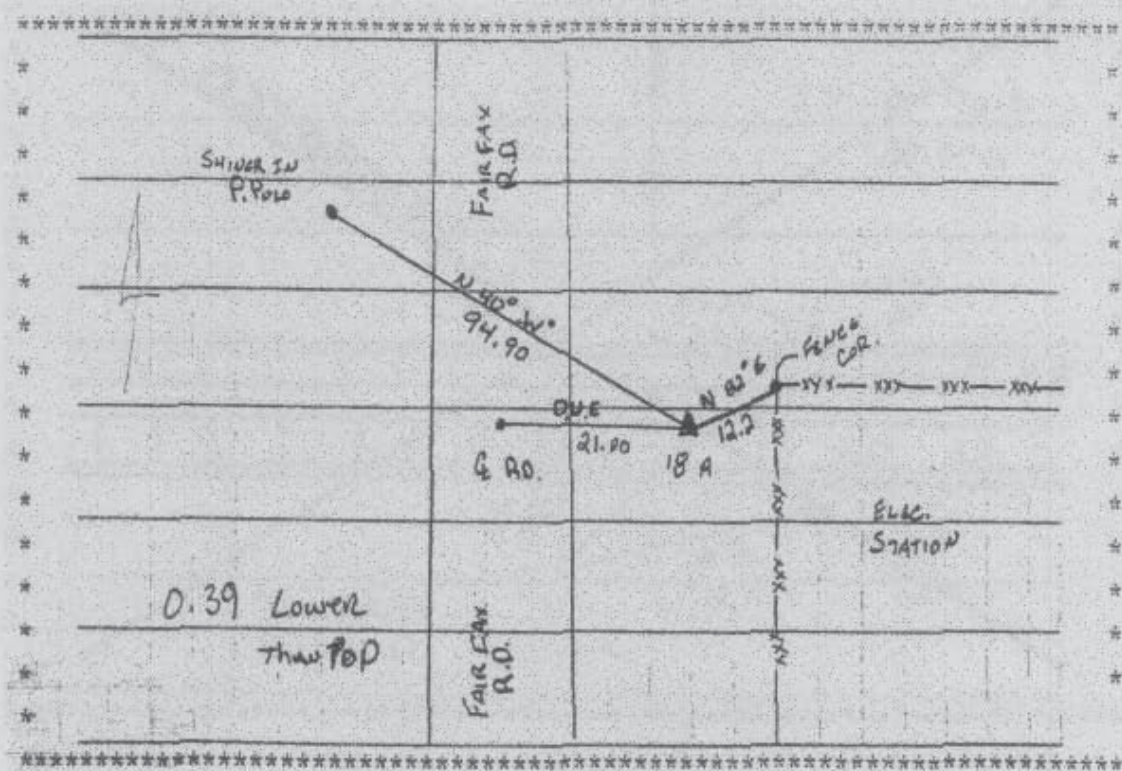
Northing: **3437186.35sft** Easting: **5391025.13sft**

Orthometric Height: **755.71sft** Ellipsoid Height: **650.37sft** **Geoid03**

Latitude: **41°54'57.16442"N** Longitude: **91°46'26.19661"W**

Mapping Angle: **1°10'11"** Combination Scale Factor: **0.99999975**

Monument Type: Aluminum Cap on 6-foot Rebar set in a 6" dia. PVC pipe with an aluminum access cover.



Prepared by DCI and GBC for Linn Co. and the City of Cedar Rapids, Iowa (Revised 08-05-05).