

Linn County and the City of Cedar Rapids, Iowa
Iowa North Zone (1401)
Horiz. Datum: NAD83(1996)
Vert. Datum: NAVD 1988
US Survey Feet
2005

Point Name: **Linn 19**

Designation: LINN COUNTY GPS CONTROL PT. 2005-019, set by DCI for Linn Co. in 2005

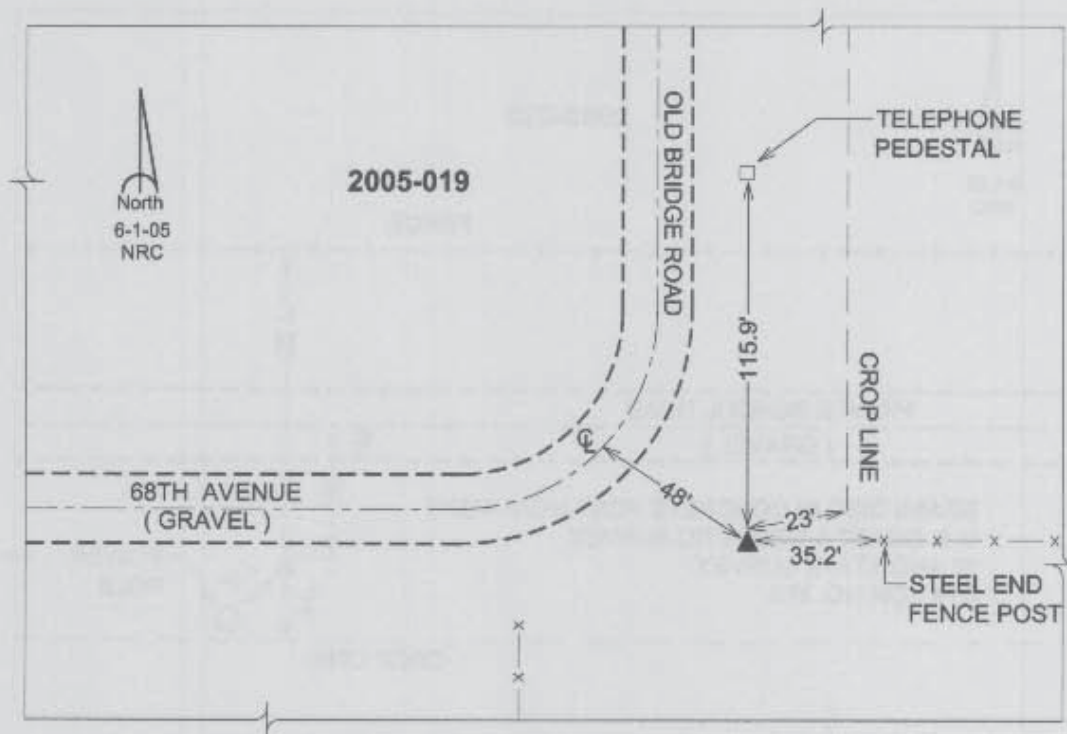
Northing: **3436353.86sft** Easting: **5403001.45sft**

Orthometric Height: **797.12sft** Ellipsoid Height: **691.52sft** **Geoid03**

Latitude: **41°54'46.49607"N** Longitude: **91°43'48.05985"W**

Mapping Angle: **1°11'59"** Combination Scale Factor: **0.99999846**

Monument Type: Berntsen Top Security Rod Monument with a 2-1/2" dia. domed survey cap and permanent magnet encased in a 5" dia. PVC pipe with a NGS style aluminum access cover.



Prepared by DCI and GBC for Linn Co. and the City of Cedar Rapids, Iowa (Revised 08-05-05).