

**Linn County and the City of Cedar Rapids, Iowa**  
 Iowa North Zone (1401)  
 Horiz. Datum: NAD83(1996)  
 Vert. Datum: NAVD 1988  
 US Survey Feet  
**2005**

Point Name: **Linn 1A**

**Designation:** Station 1A, Set by the Surdex Corp. for Linn County in 2000

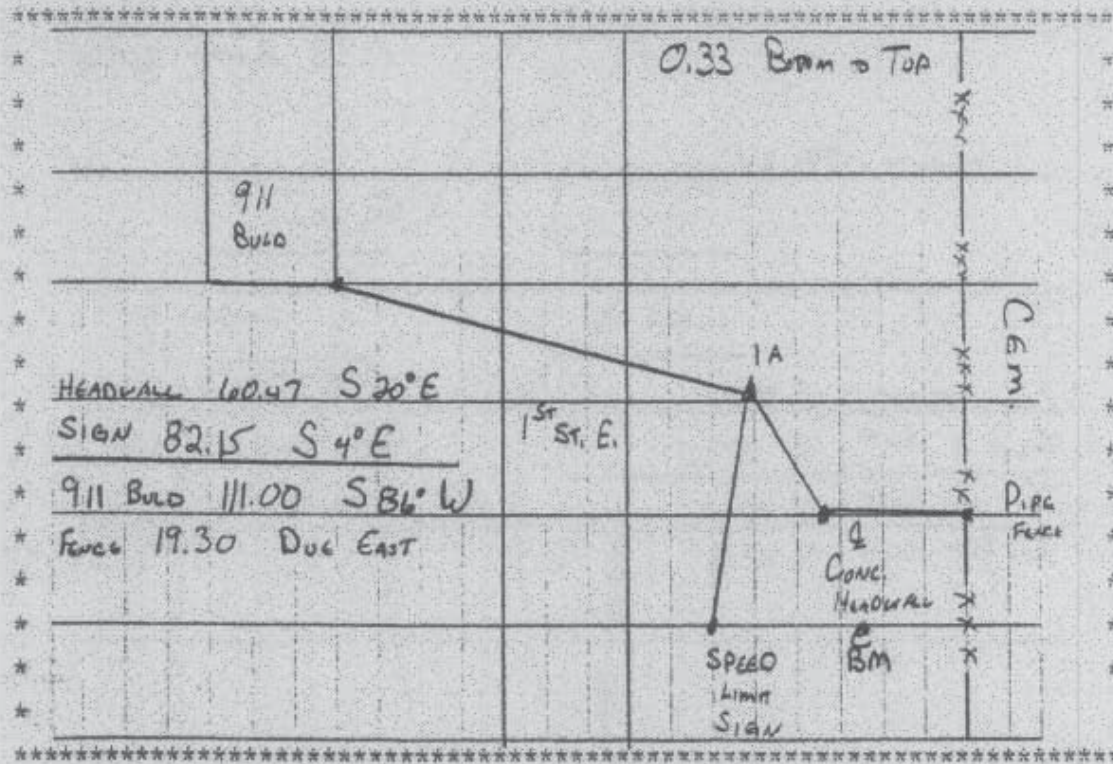
Northing: **3440066.38sft** Easting: **5490053.24sft**

Orthometric Height: **800.42sft** Ellipsoid Height: **693.98sft** **Geoid03**

Latitude: **41°55'03.53054"N** Longitude: **91°24'35.87886"W**

Mapping Angle: **1°24'59"** Combination Scale Factor: **0.99999727**

**Monument Type:** Aluminum Cap on 6-foot Rebar set in a 6" dia. PVC pipe with an aluminum access cover.



Prepared by DCI and GBC for Linn Co. and the City of Cedar Rapids, Iowa (Revised 08-05-05).